

eduros
ECDIS
Type Specific ECDIS Training - JRC

Ver. 2.1 User Manual

English (Offline Version)

KJ
ENGINEERING

TABLE OF CONTENT

Section I

1 Introduction	-----	04
2 Installation	-----	06
3 Execution	-----	10
4 Functions	-----	12
5 Learning	-----	31
6 Practice	-----	37
7 Test and Evaluation	-----	42
8 Saving Results	-----	54

Section II

1 User Verification	-----	57
2 Certification	-----	58

Section III

1 Glossary of Terms	-----	59
2 Documents	-----	62



eduro
ECDIS
Type Specific ECDIS Training - JRC

Ver. 2.1 User Manual

English (Offline Version)



The Manual is comprised of three sections, The first section covers the Computer Based Training program from installation to test saving results on your computer, the second section guides you how to get yourself certified after success of the test in both an online and offline conditions, In the last section, you can find all relevant glossary and documents necessary for the eduroECDIS.

Section I

1. Introduction



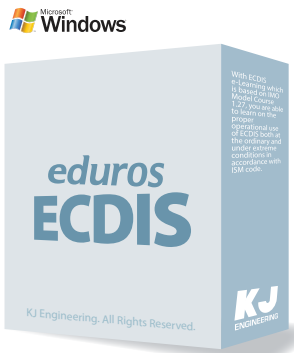
1. edurosECDIS (e-learning) is an e-learning solution which is made up of typically web-based training technologies and web-assisted learning tools for the JRC ECDIS Type Specific training (JRC 701B and 901B series ECDIS and the JAN-2000 ECDIS).

You are able to learn on the proper operational use of ECDIS both at the ordinary and under extreme conditions in accordance with ISM code.

- Familiarization with the specific ECDIS model according to ISM Code
- Interactive Courses
- Multi-language Supports
- Practical Exercises
- Similar UI as real ECDIS
- Online Supports & Management of Trainee's record (Eduros)

2. You can simply start the training with just the program installation in your PC.

3. Whole process including course taking, test, user verification and certificate issuance is conducted stage by stage in one program.



Microsoft Windows

With ECDIS E-Learning which follows the JRC 701B/901B series and the JAN-2000 ECDIS, you can make familiar on the proper operational use of ECDIS both at the ordinary and under extreme conditions in accordance with ISM code.

eduros ECDIS

KJ ENGINEERING

KJ Engineering. All Rights Reserved.

Type Specific ECDIS Training - JRC

e-Learning Contents for PC
LMS (Learning Management System)
Platform: Windows
Device Type: PC
Version: edurosECDIS ver.2.0
Size: about 800M

4. Compatible equipment



JAN-901B

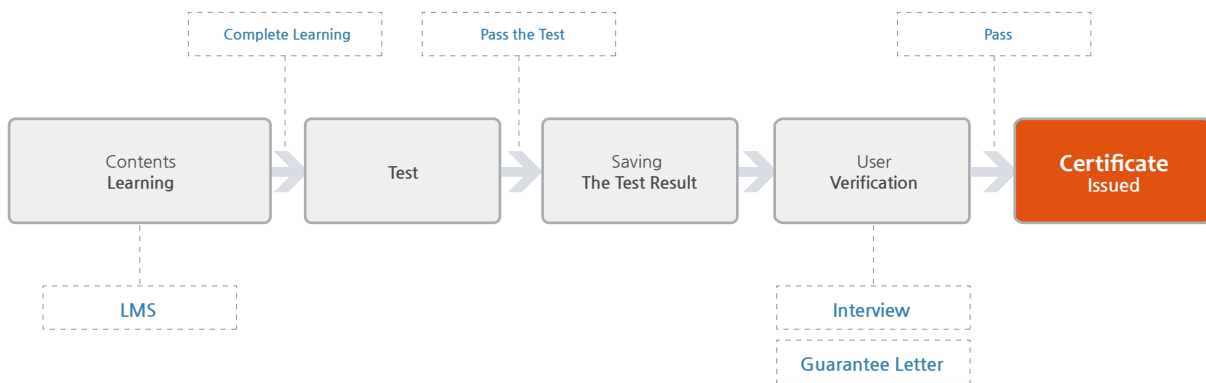


JAN-701B



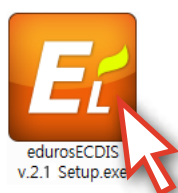
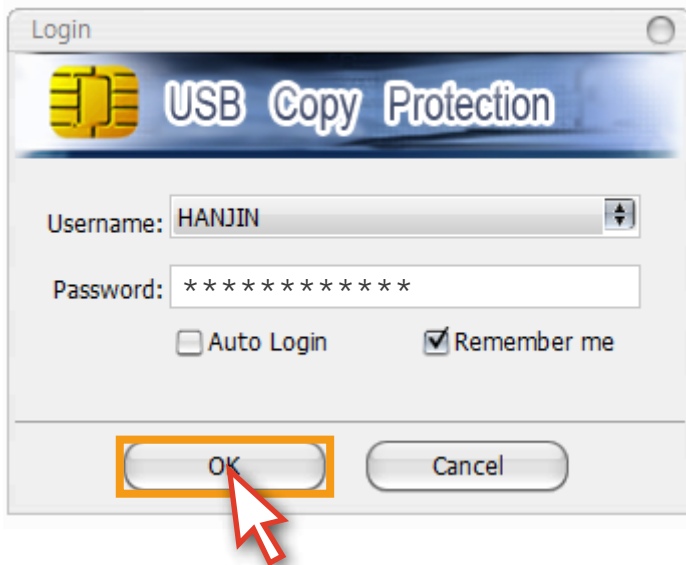
JAN-2000

5. Certificate Issuance Procedure



LMS: Track the Learning Process, Learning History Management, Learning Process Management, Records Management

2. Installation



1. Insert the 'edurocECDIS program USB' in your PC

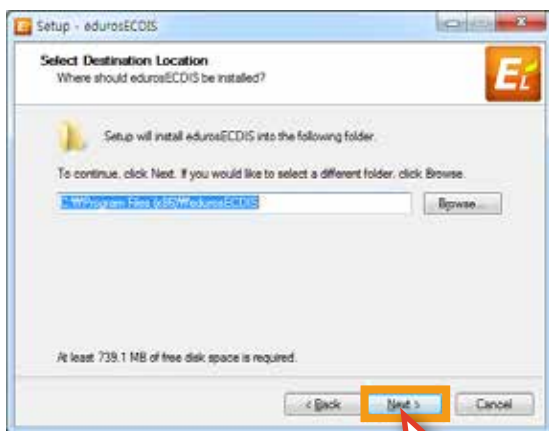
2. Run 'Client program' in the USB

3. Log in with the 'User Name' and 'Password' on the login window and click on 'OK' button

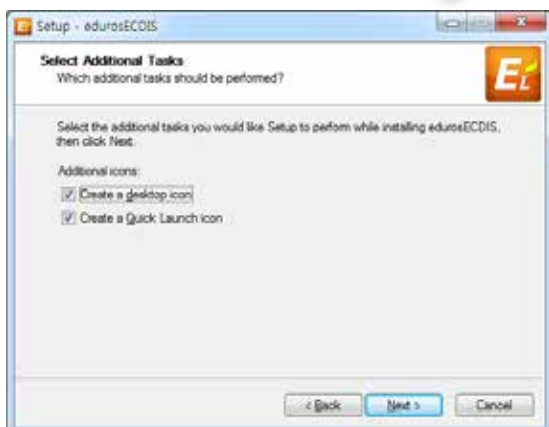
4. Click on the 'Setup.exe' File in the folder and follow the directons.



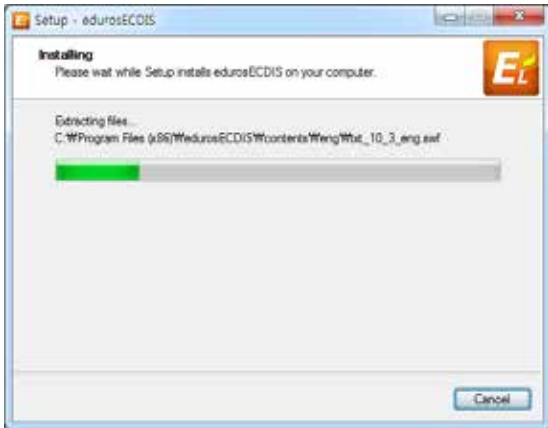
5. Click the 'Next' button.



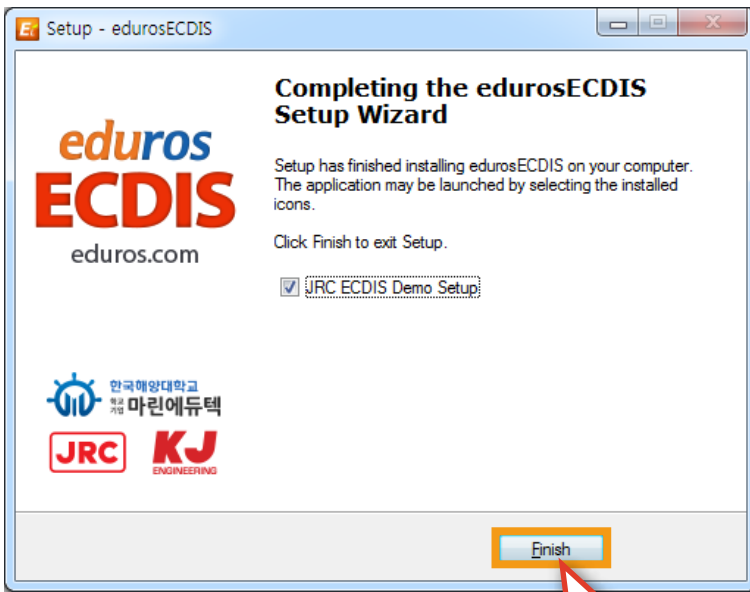
6. Click the 'Next' button after select the folder for installation.



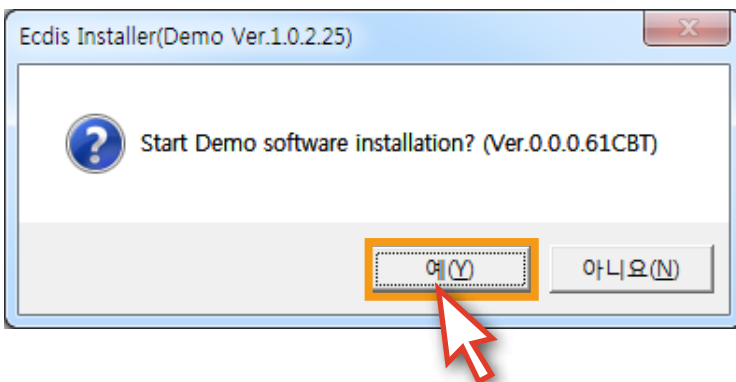
7. Check the 'Create a desktop icon' and the 'Create a Quick Launch icon', if you want and click the 'Next' button.



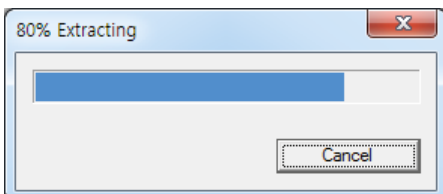
8. Installing will be started.

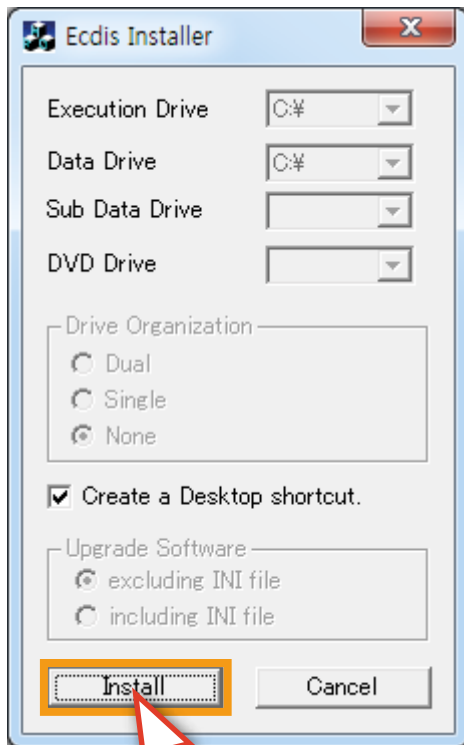


9. eduroECCDIS v.2.0 installation has been completed. Please click the 'Finish' button.

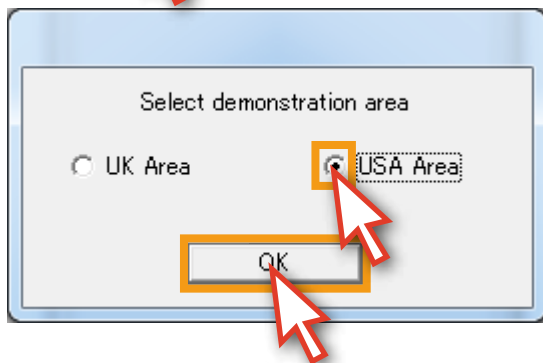


10. After completion of eduroECCDIS v2.0 installation, 'ECCDIS Installer (Demo Ver.1.0.2.25)' pop-up window will appear. Click the '예(Y)' button to install the 'JRC DEMO software'.

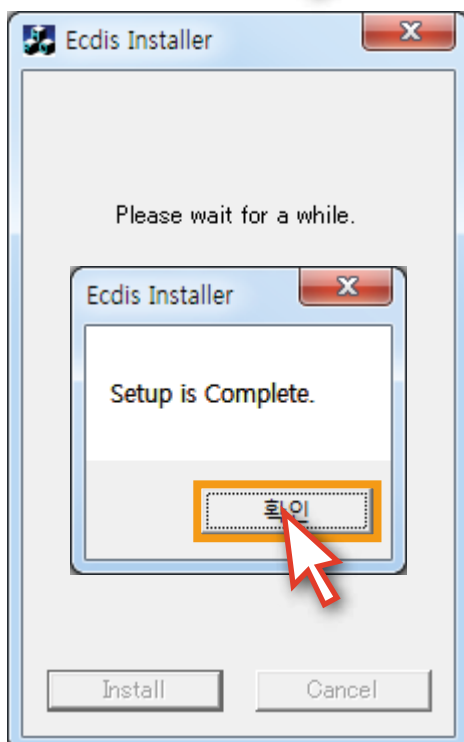




11. Click the 'Install' button.



12. Select 'USA Area' and click the 'OK' button.
(all users should select the 'USA area'.)



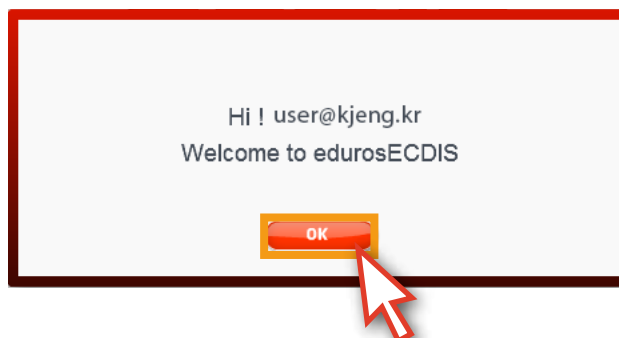
13. To complete the program installation, click the '확인' button in Setup is Completed.

3. Execution

1. Run the training program by clicking the 'edurosECDIS icon' on your desktop.



2. Input the given 'ID' and 'Password' on the Sign In popup window and click the 'SIGN IN' button.
(If you check the 'Remember me' box, it will remember you from the next log-in.)
When the welcoming message is appeared, click the 'OK' button.



3. Select the 'language' you want to use for the training.

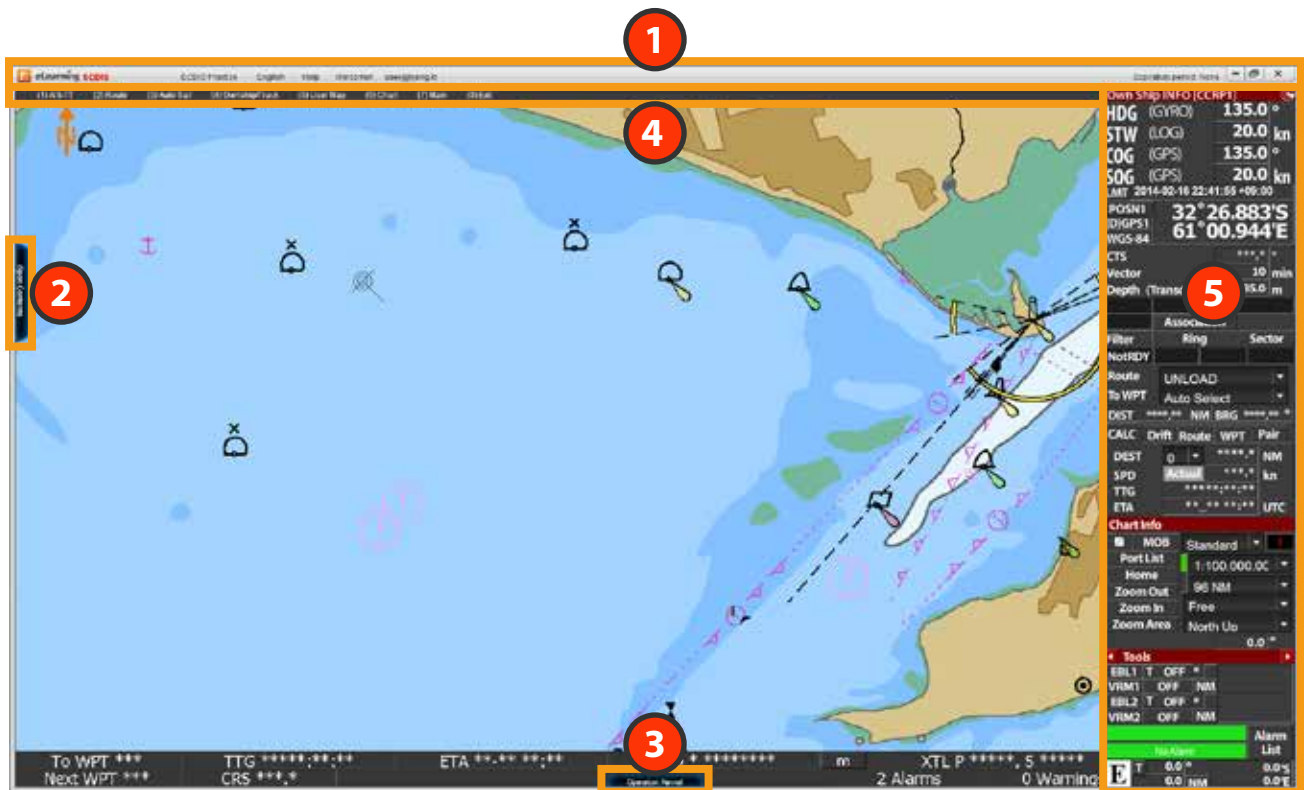


4. The 'training program' will start.



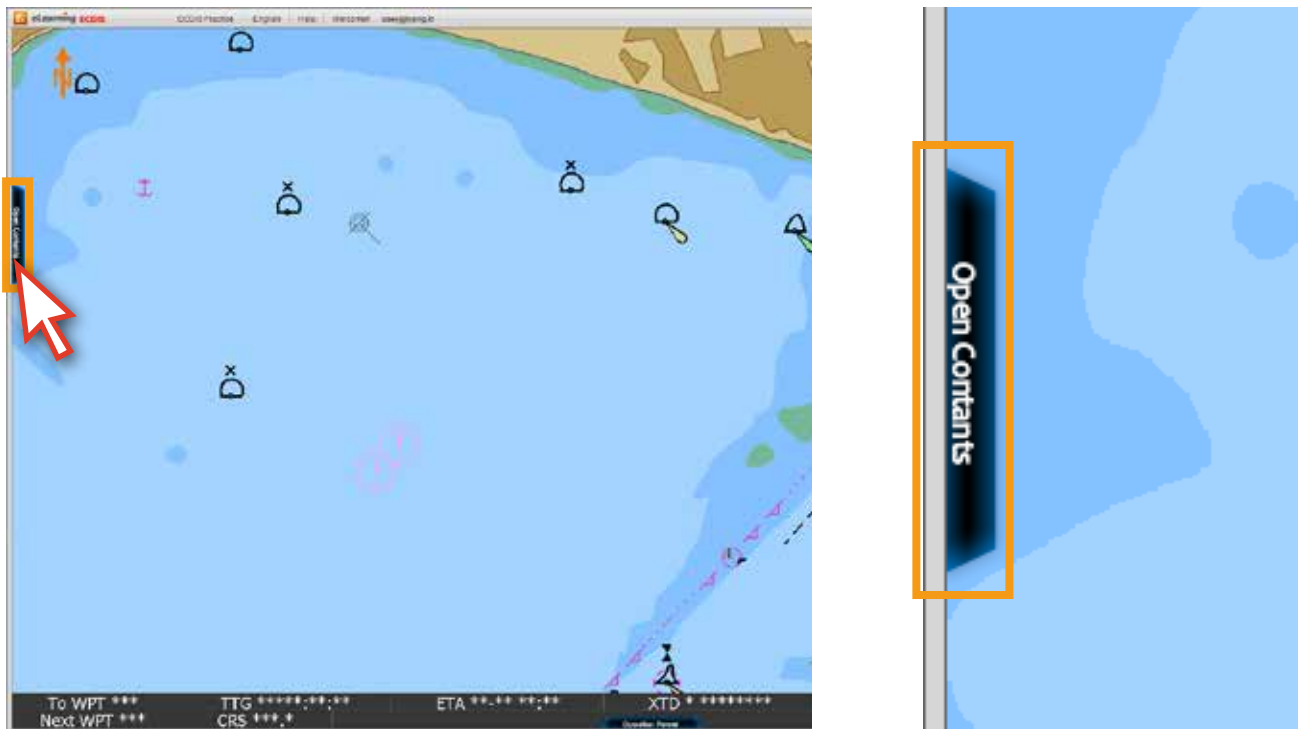
4. Functions

edurosECDIS configuration

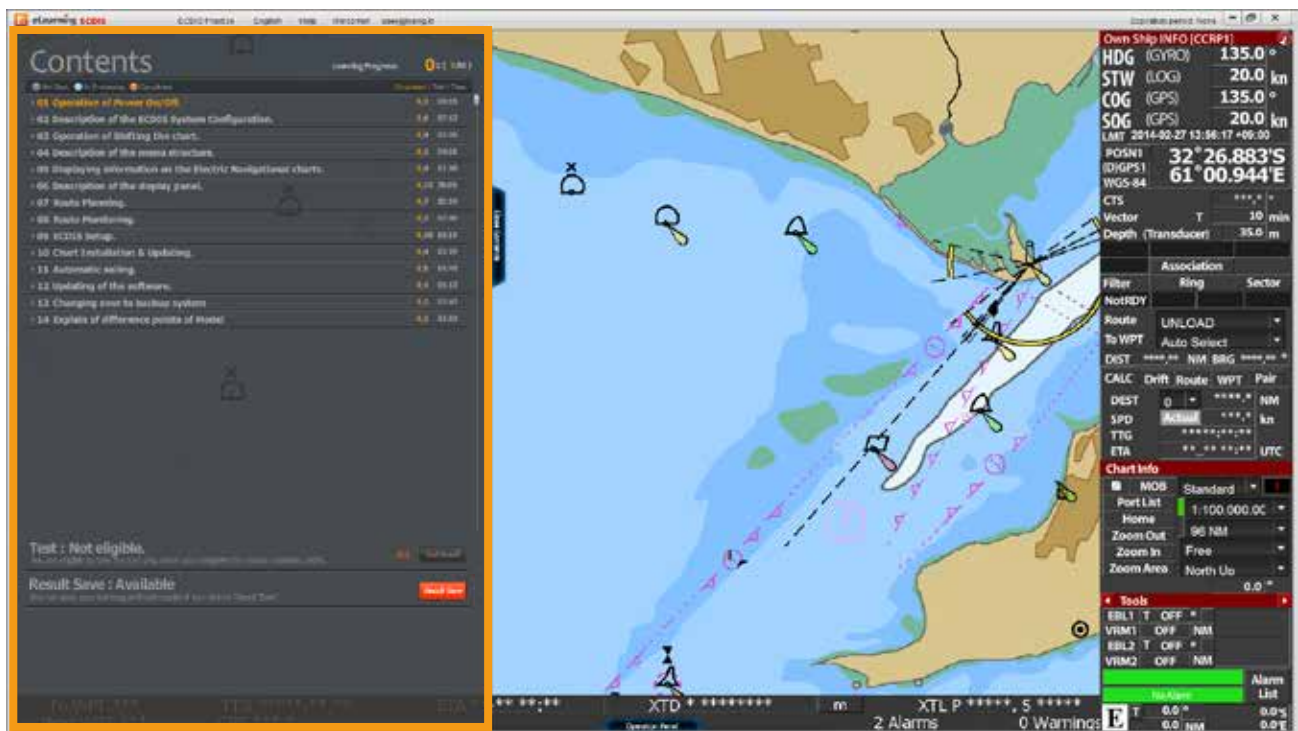


- 1** **Main Menu**
It includes such functions as User Verification, Language Select, Practice Mode Change and Help.
- 2** **Contents Panel**
It is a main content page with the Contents list, Test and even saving the Test Results so that you can learn all the lessons on your own here and take the test in the end. This page will be most useful also for you keep track of your courses together with status quo mark by the side end.
- 3** **Operation Panel**
It is a Graphical Operation Panel which describes the name and function of each part on the panel.
- 4** **Top Menu**
It is the same as that of the real ECDIS, and The detailed functions can be enlarged on what you move the mouse cursor.
- 5** **Display Panel**
It displays various navigation information for sailing including alarms and buttons and Every function will be described in details according to the mouse cursor position over the menu.

1. This is where you start, Please Click on the 'Open Contents' menu on the left side of the main screen.

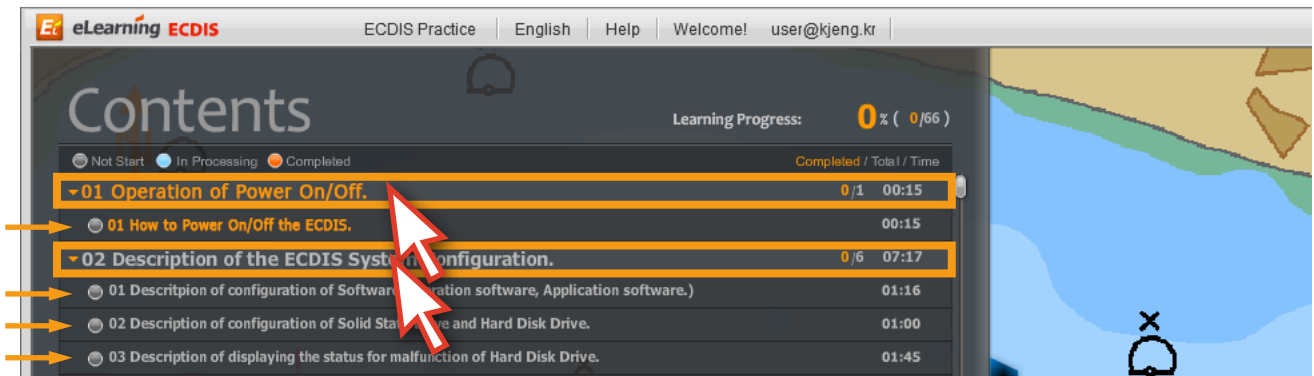


2. The 'Contents list' will appear.

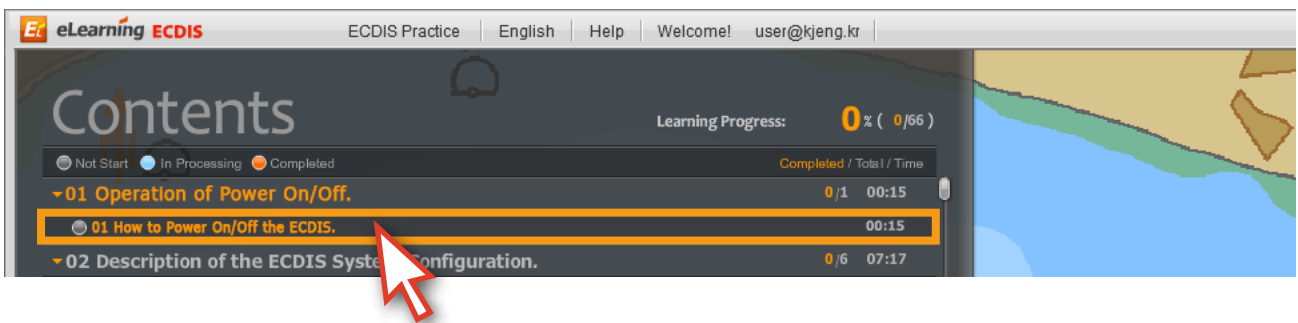


3. You can select the each 'title' on the list.

(If you click a 'title', the 'sub-title list' will appear and click the 'title' again, the sub-title list will be closed.)



4. Click on 'the lesson' you want to take, then it will be highlighted in orange color below.

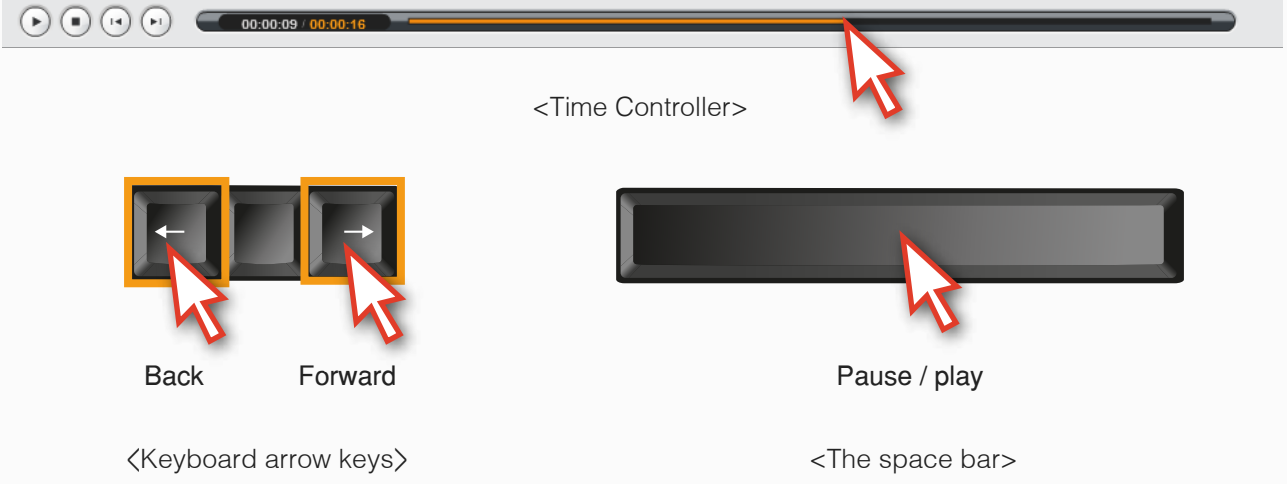


5. At the same time, the 'Contents List' is automatically closed. And it starts with the lesson window below.



6. The animation is controlled by the 'Time controller', 'Arrow keys' and the 'space bar' on the key board just like a normal video player.

(Please be noted that The time controller is not available for first time user, it is available for user from the second time.)



The diagram illustrates the controls for a video player. At the top is a progress bar with a play button on the left and a red mouse cursor pointing to it. Below the progress bar are three sets of controls: 1) 'Back' and 'Forward' buttons, which are keyboard arrow keys (left and right arrows) highlighted with orange boxes and red mouse cursors. 2) 'Pause / play' button, a rectangular button highlighted with a red mouse cursor. 3) A label '<Keyboard arrow keys>' and '<The space bar>' pointing to the respective controls.

<Time Controller>

Back Forward

Pause / play

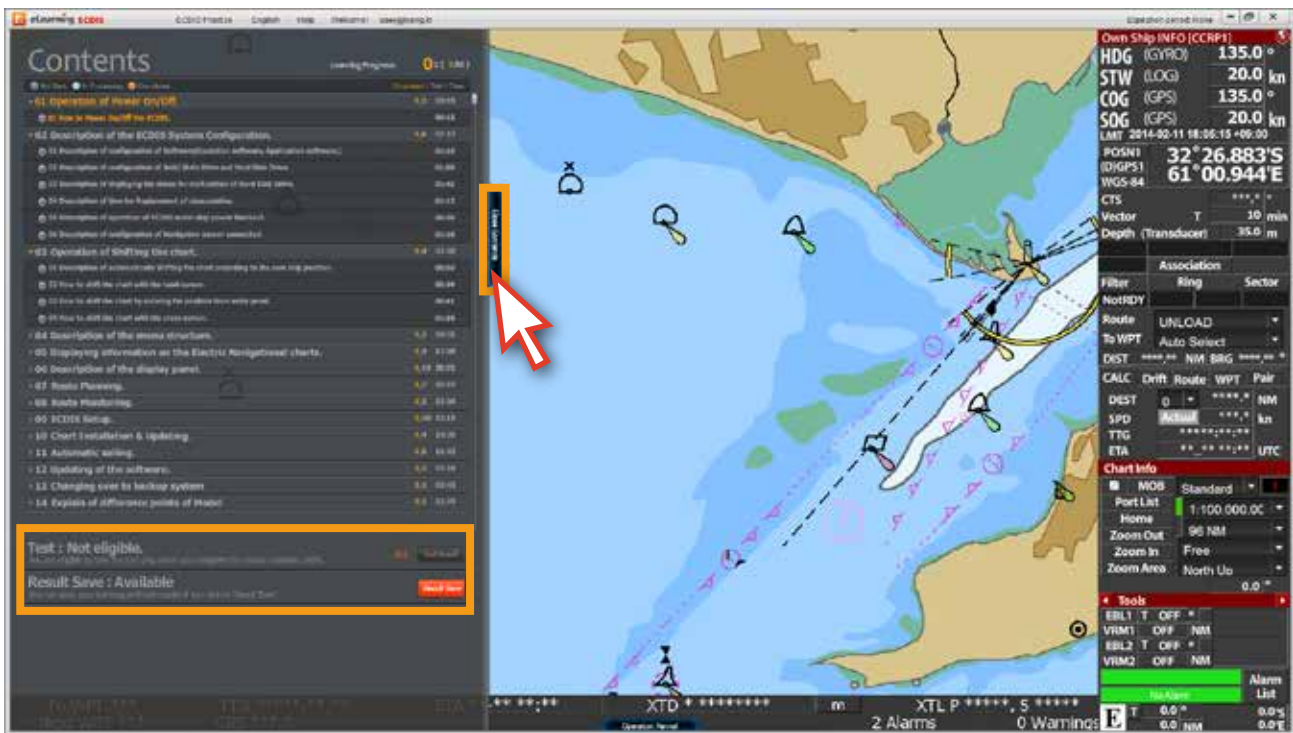
<Keyboard arrow keys> <The space bar>

<Time Controller><Keyboard arrow keys> : The function does not work for first time user, it is only available for the student who completed all the lesson once.

7. After finishing the animation, click the 'X' button to close.



8. There is a 'Test' under the Contents list and this function will be explained in chapter 7.



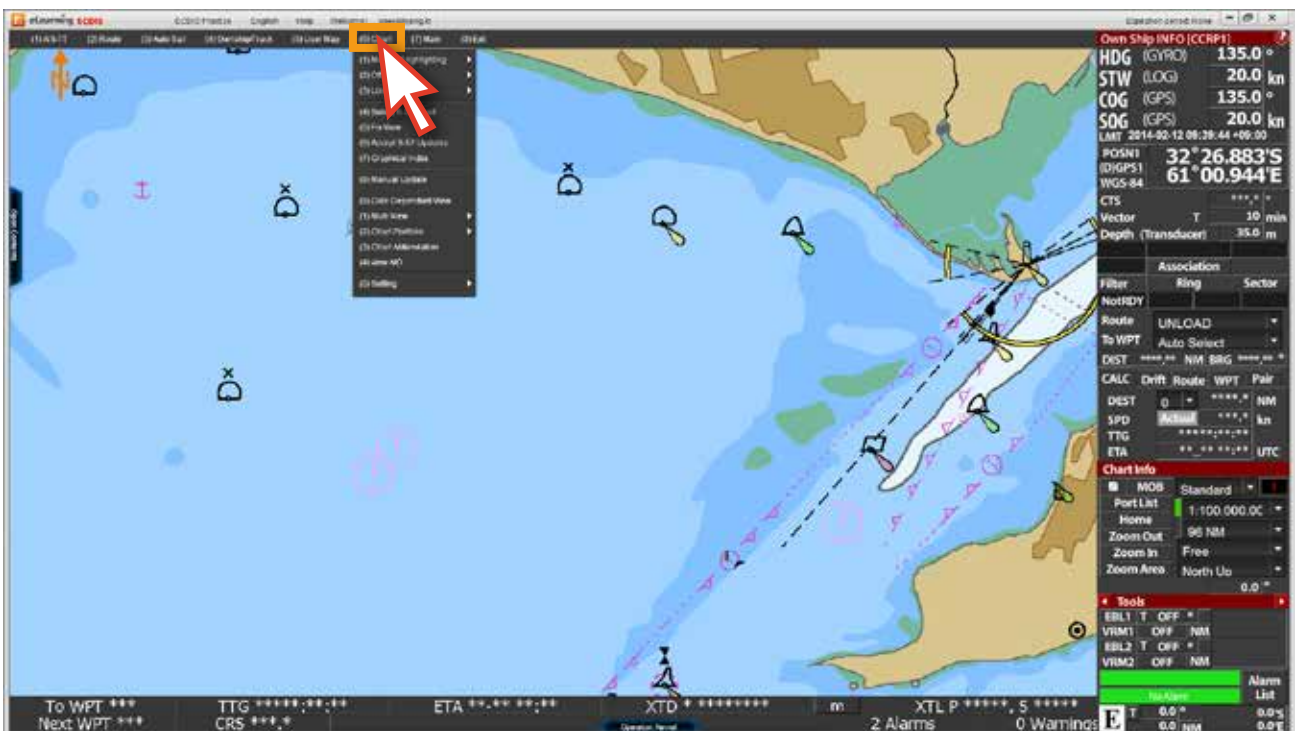
9. There is an 'Operation Panel' at the bottom of the main screen.



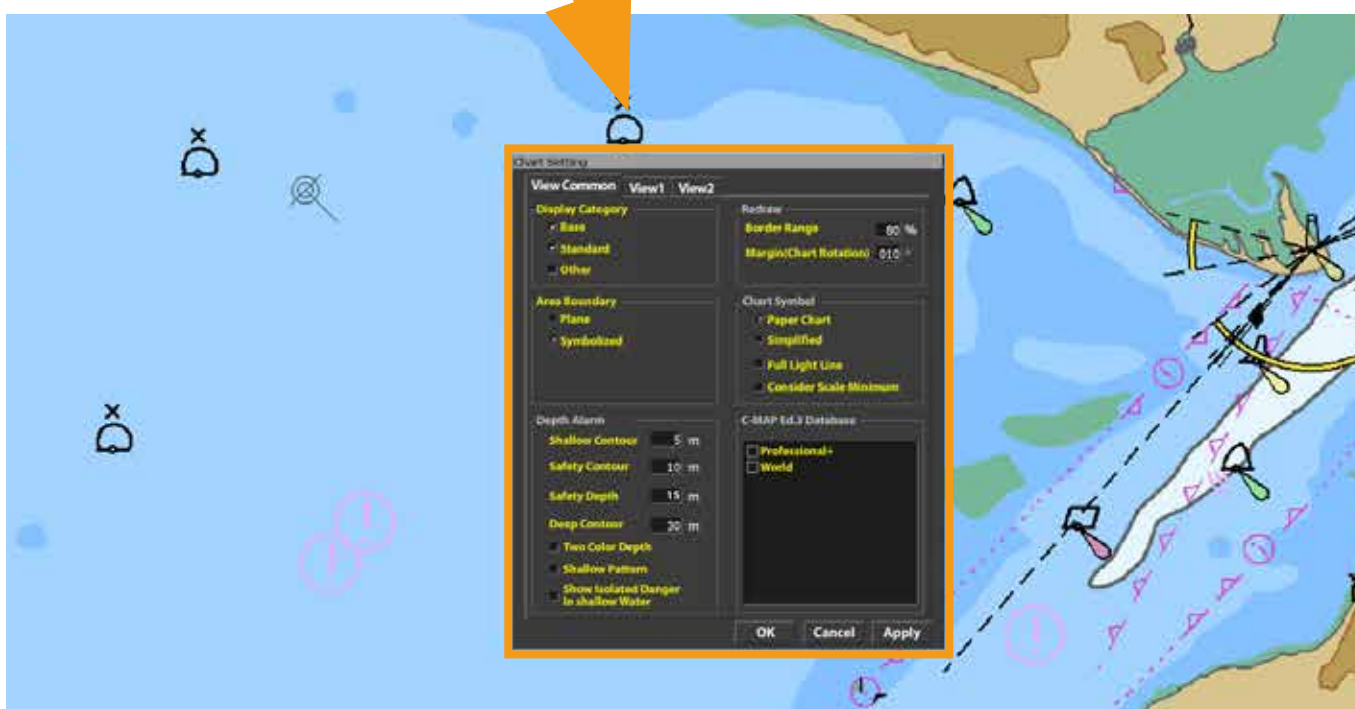
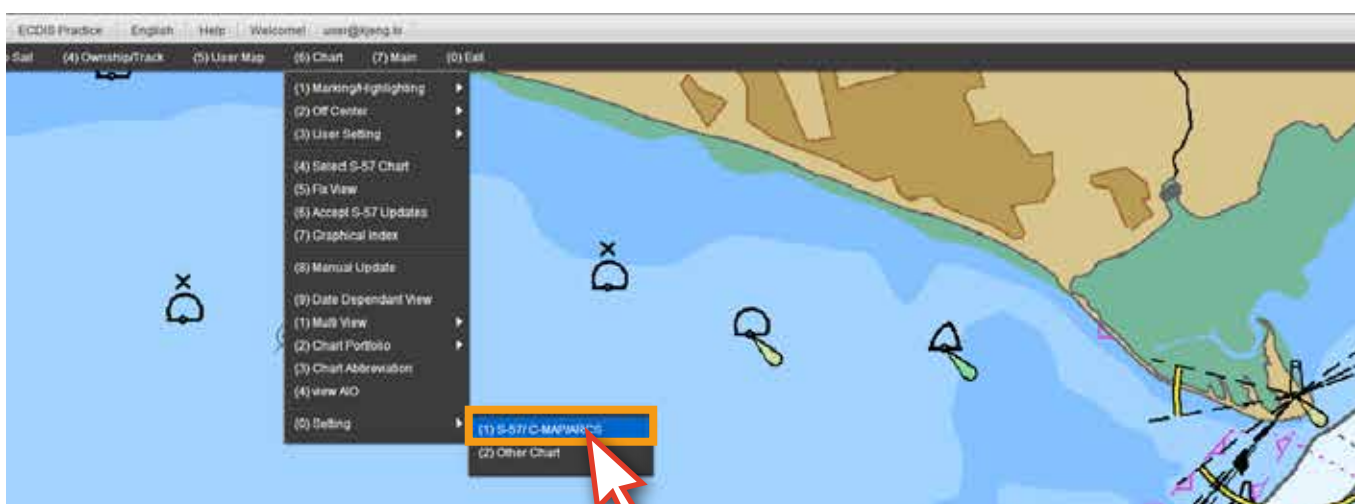
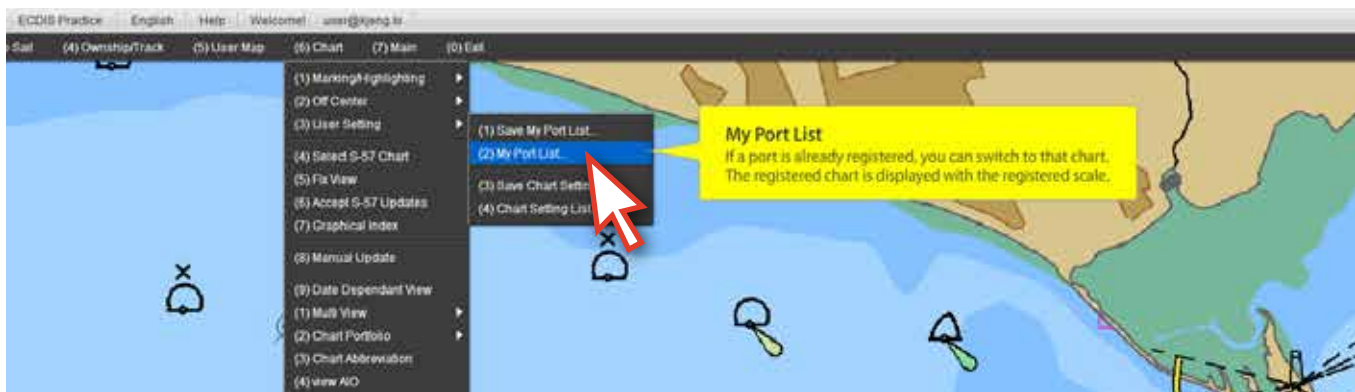
10. You can listen to or read the function explanation for each button on the 'operation panel'
 Click the 'X' button or 'Close Operation Panel' button to close the Operation Panel.



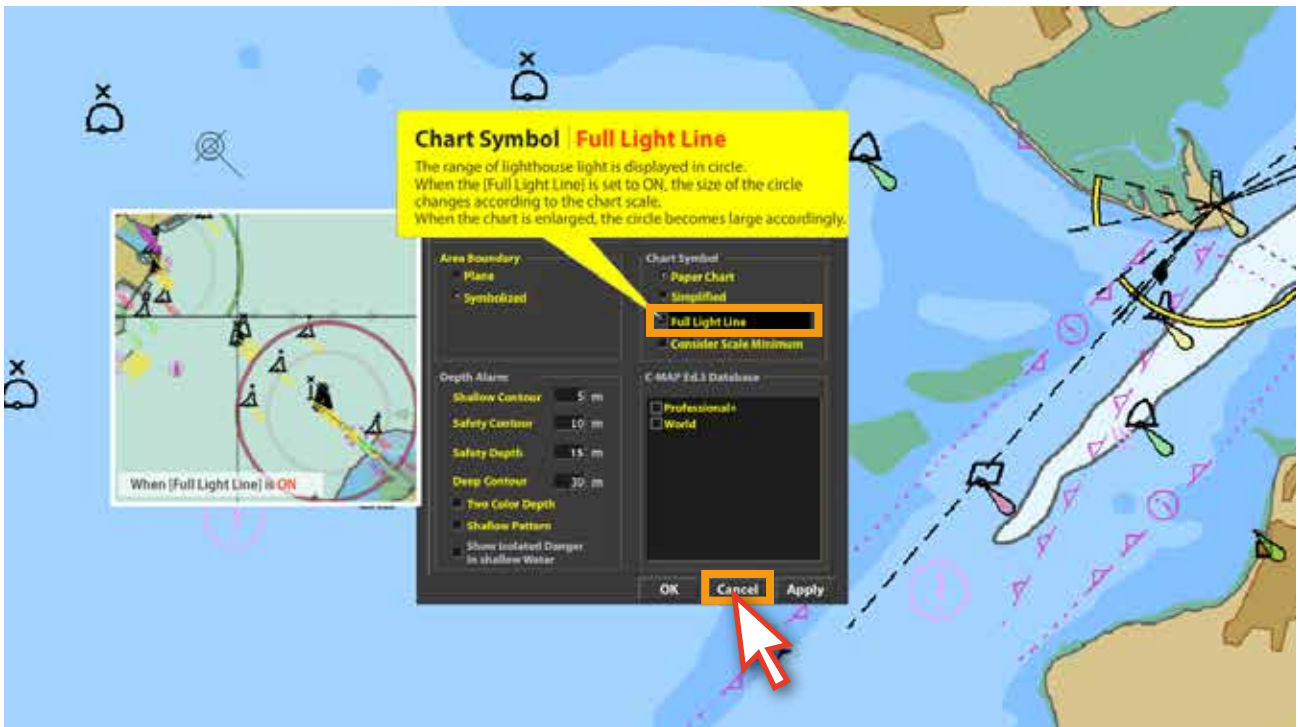
11. If you move the mouse to upper side of main screen, the 'Menu Bar' will be opened.
 Click one of the menu, then the 'sub-menu' will be opened.



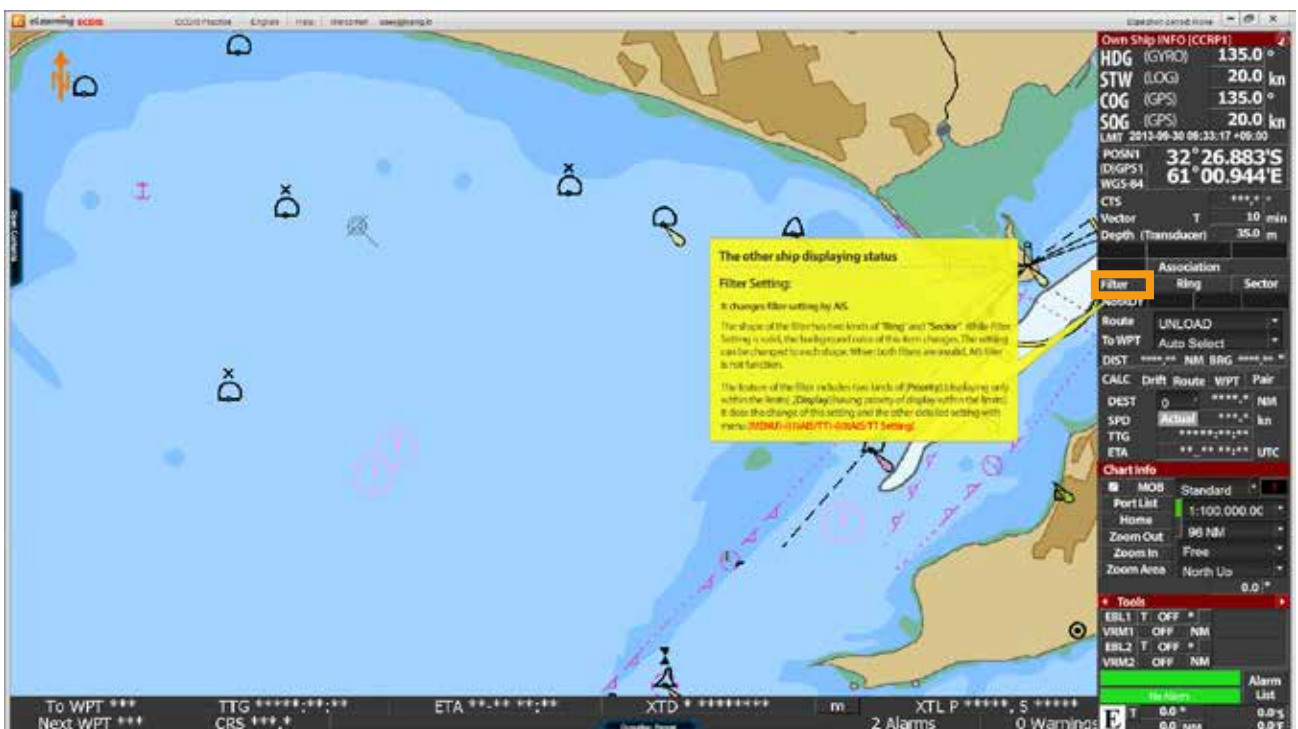
12. Move the mouse to each 'sub-menu', then the explanation will be appeared in yellow box.
If there is no yellow box appeared, click the 'menu'. Then the 'corresponding pop-up window' will be opened.



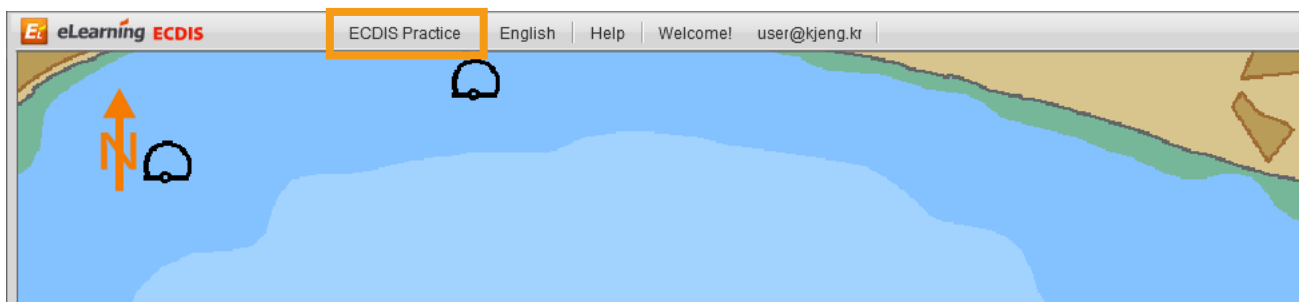
13. Mouse over each 'menu' on the pop-up window for detailed information of the selection to show up in a 'yellow dialogue box'.
Click the 'X' button or 'Close' button to close the pop-up window.



14. Mouse over each 'Display Panel menu' at the left side of the main screen and detailed information of the menu will appear in a 'yellow dialogue box'.



15. If you click on the 'ECDIS Practice' menu at the top of the program screen, you will start the 'ECDIS practice program'.



16. Below picture is an example of ECDIS practice program running. (Some Operation limited)
The ECDIS practice program has an identical UI and the same functions as the real equipment and you can practice what you learned through the 'edurosECDIS animation'.



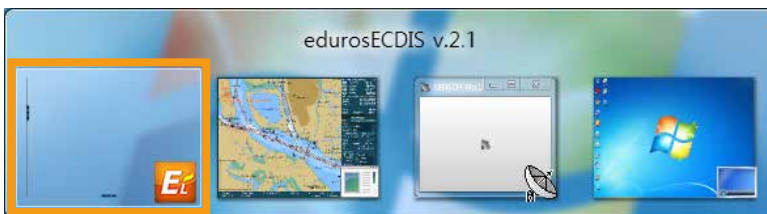
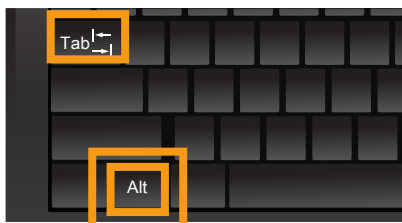
17. During the running of the ECDIS practice program, you can still open the 'Contents List' or 'Operation Panel' to take some help or references for your practice.



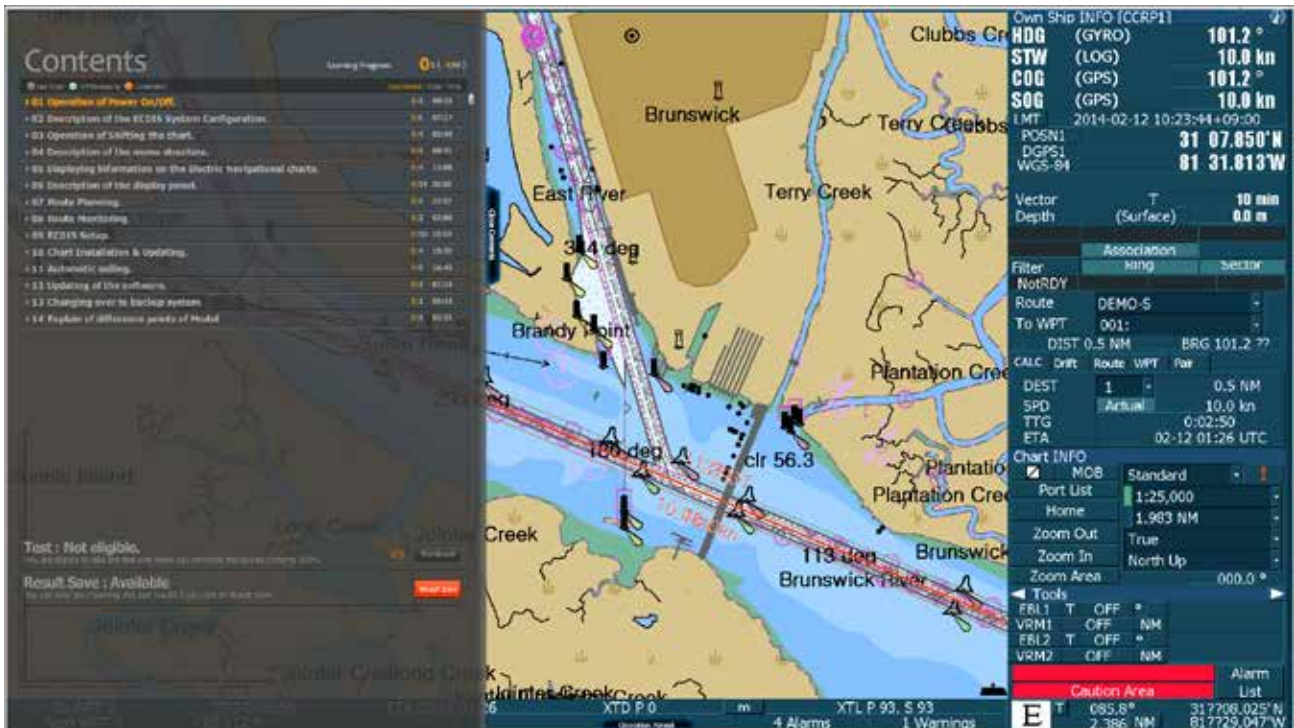
In case the menu of open contents or the operation panel is invisible



Hold down 'Alt' Key and press 'Tab Key' once, then The Menu show up below on the screen, you can switch to edurosECDIS v2.1 by pressing and releasing 'Tab' key while holding down 'Alt' key.



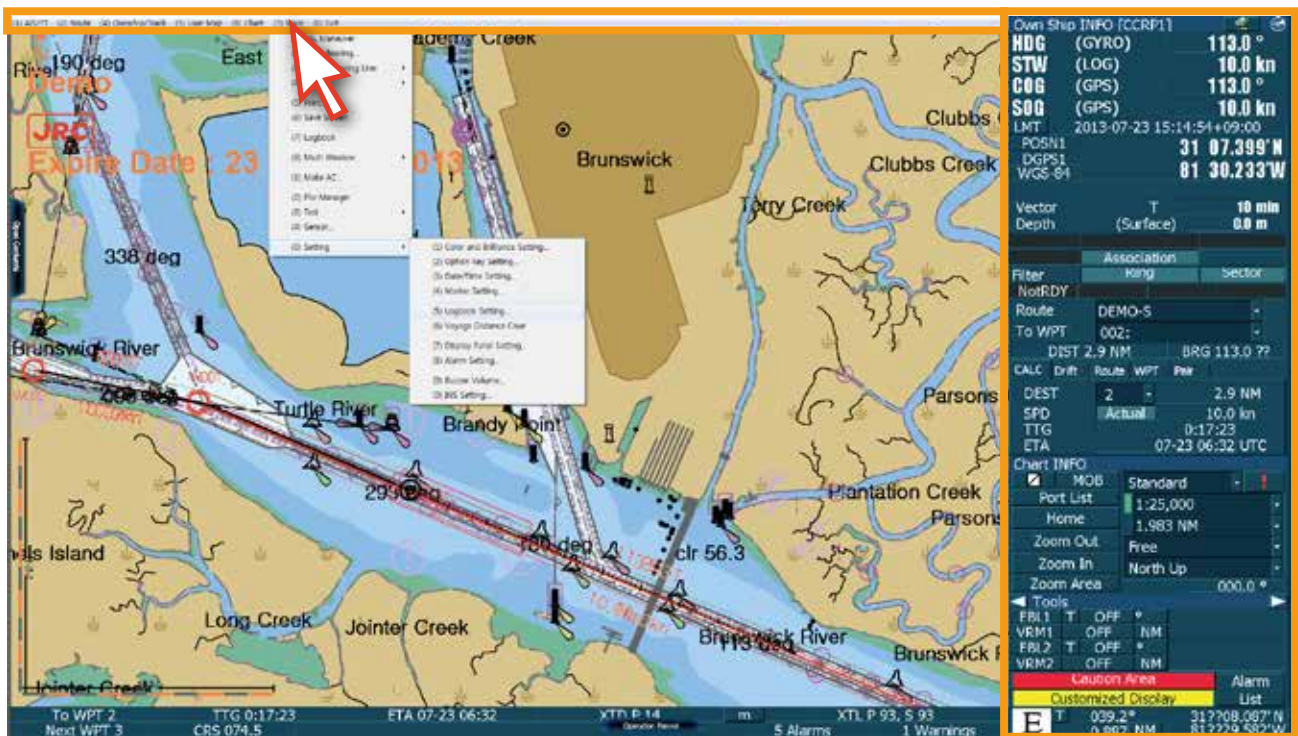
18. Below picture is the example of opening the 'Contents list' during the practice program running.



19. Below picture is the example of the 'animation' playing during the practice program running.



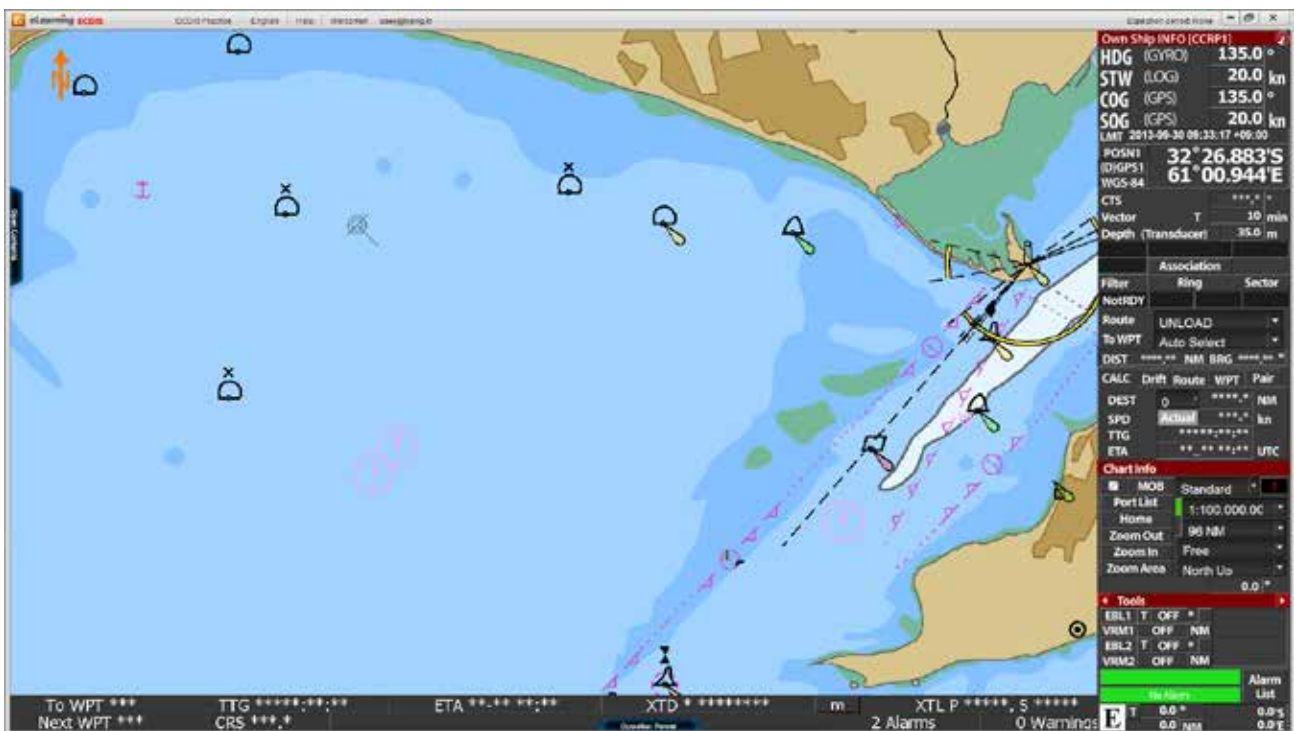
20. Below pictures are the samples of practicing with the ECDIS practice program. The 'top menu bar' and the 'Display panel' of right side are available to be operated by you for your practice just like real ECDIS functions.



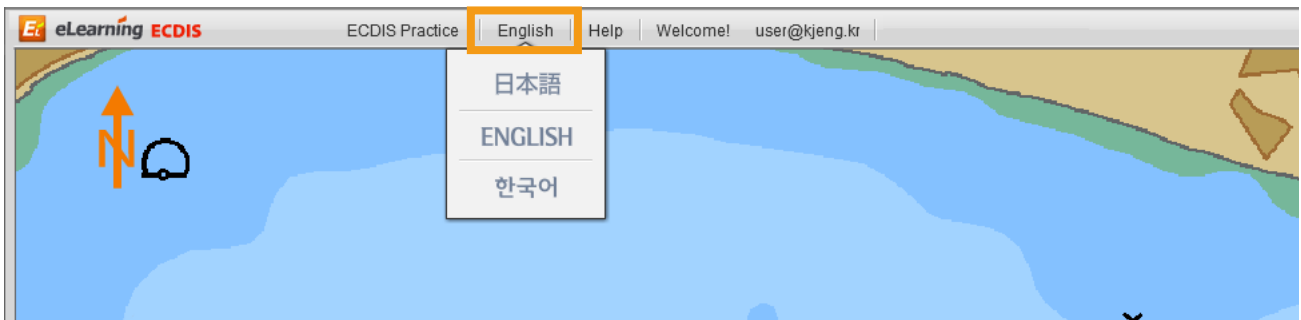
21. When you want to go back to the edurosECDIS from the practice program, click the '(0) EXIT' button at the top of the program screen.



22. Now you come back to the 'edurosECDIS main' page from the practice program.



23. By clicking the 'Language' menu, you can change your learning language. The three options are 'English', 'Korean', and 'Japanese'.



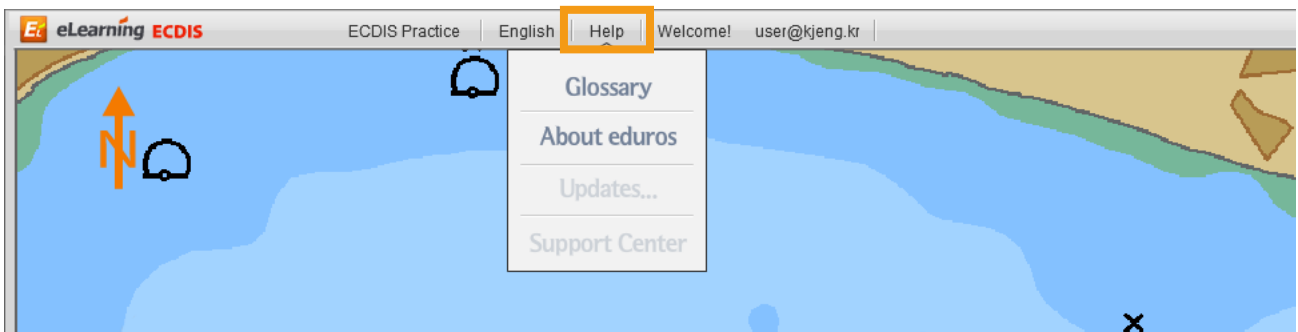
24. Click 'Japanese'.



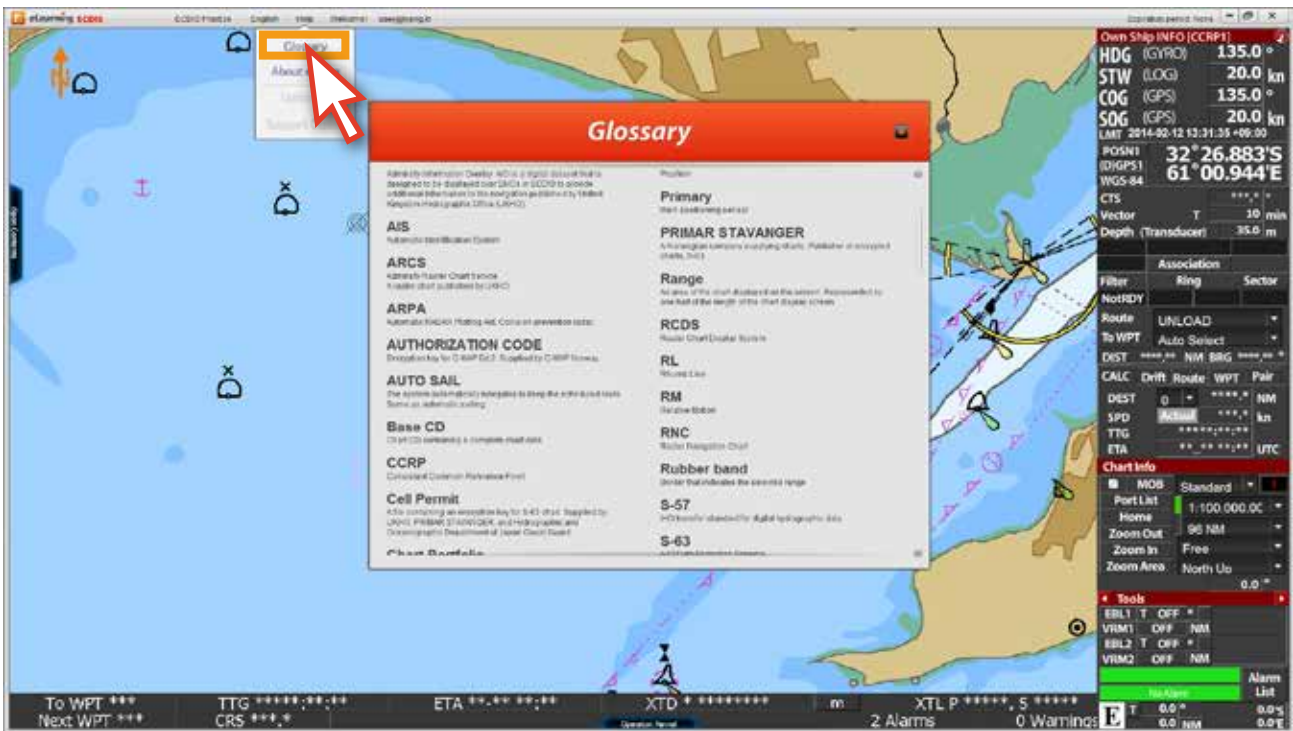
25. The content's language has been changed to 'Japanese'.



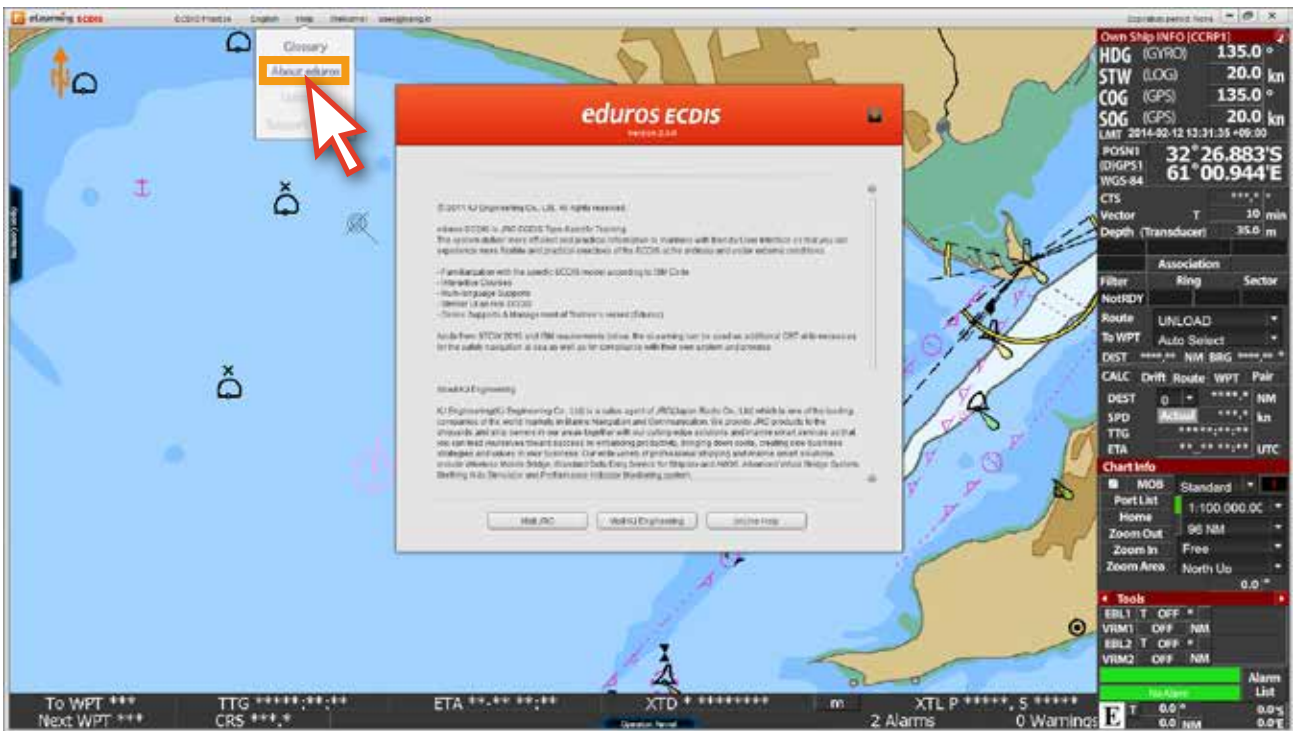
26. If you click the 'Help', the drop-down menu is opened.



27. If you click the 'Glossary', you will find the explanation of terminology.

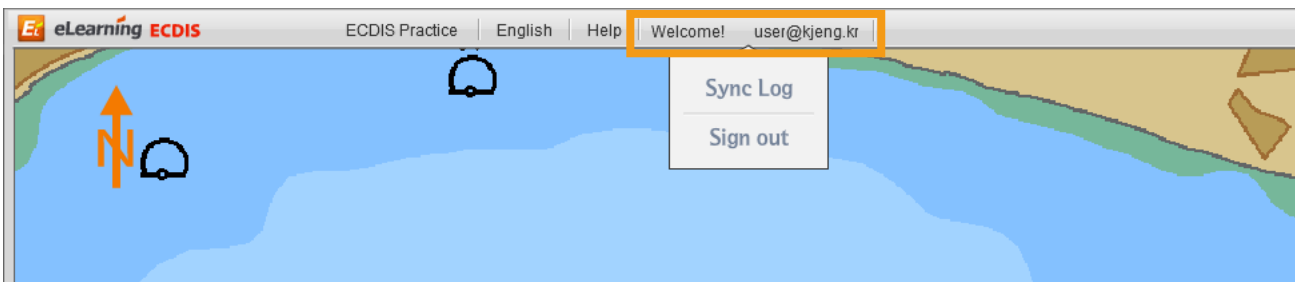


28. 'About eduros' menu gives you the information related to the 'eduroS ECDIS' program.

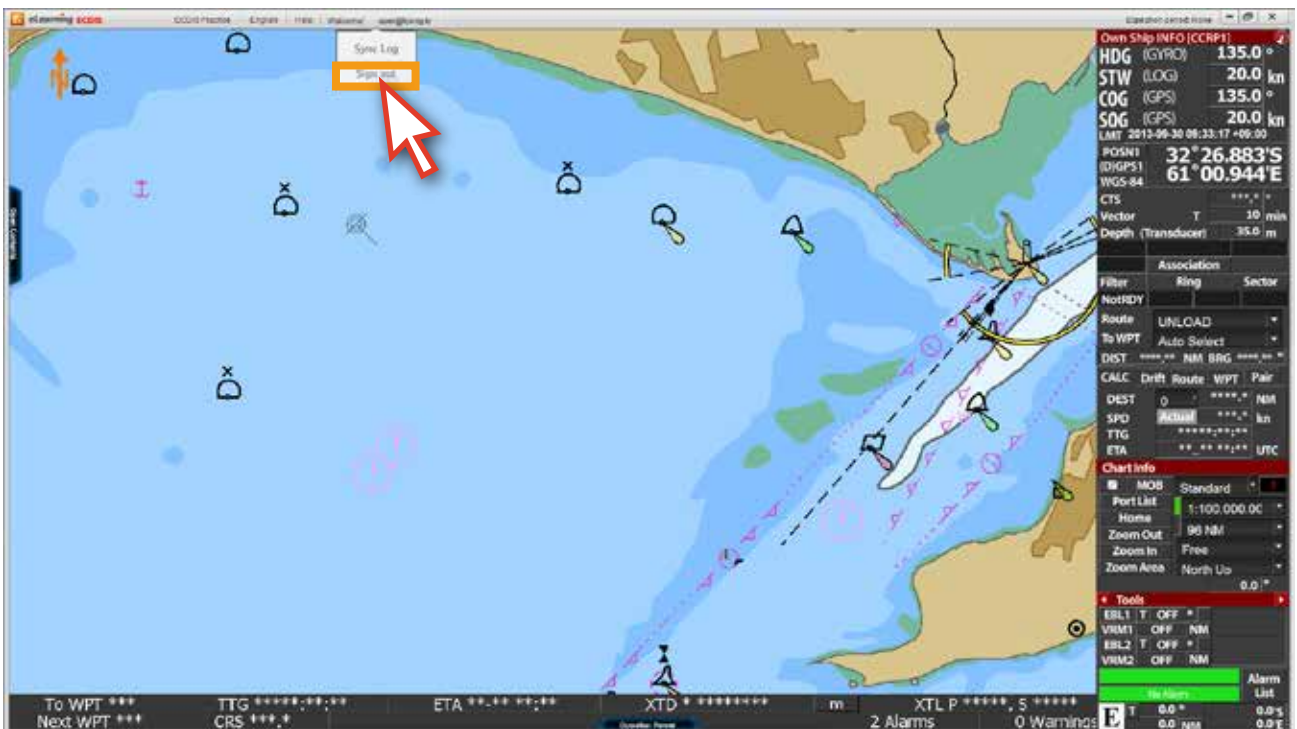


29. The deactivated 'Updates...' and 'Support Center' menu are online oriented functions. The 'Updates...' menu is for update online when any contents update is necessary. The 'Support Center' menus is the online Q&A function.

30. If you click the 'Welcom! ID', a drop-down menu is opened.



31. The 'Sync Log' menu is used for the training status update.
If you click the 'Sign out', you will be logged out from the program.

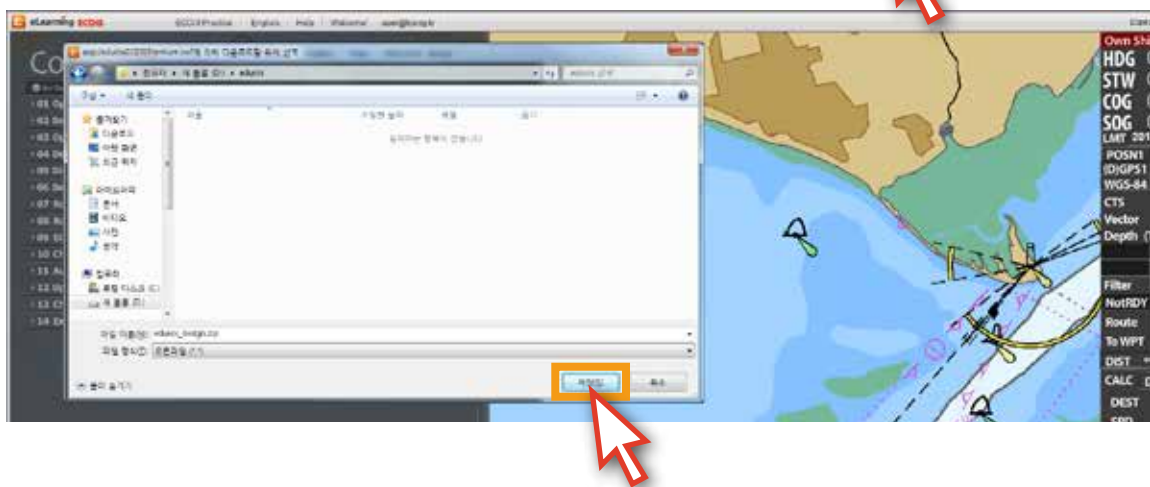
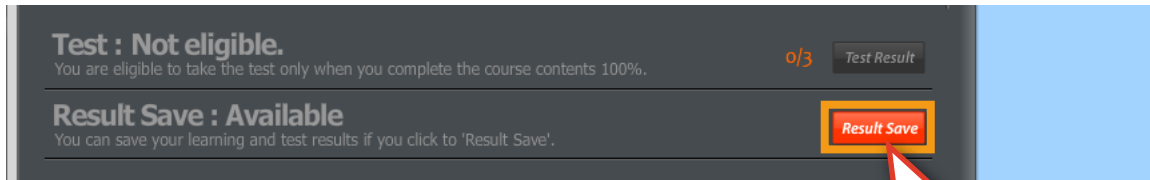




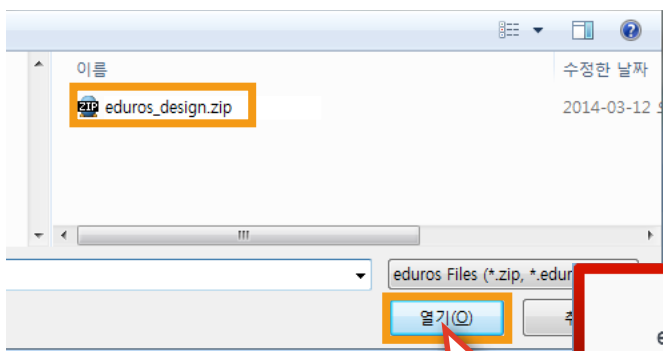
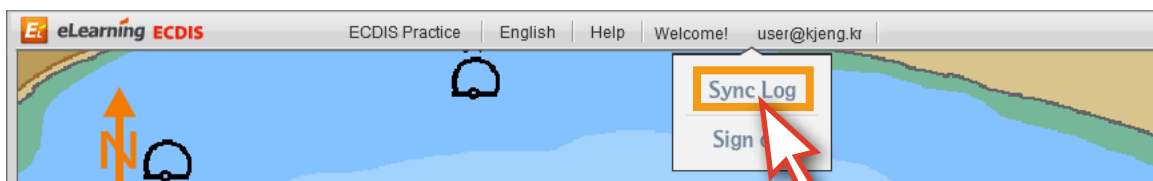
How to use the Sync Log

The Sync Log is a function in the offline mode which can synchronize all of your learning records on any computer where you study.

- 1, Please save your learning result as *****.zip** format in your PC by clicking on 'Result Save' menu below. (Save to USB or an external hard, etc.)



2. Please Sign in to the eduroECDISprogram on another computer you're working on, go to the 'Syn Log' menu and update your learning record by clicking on it below.



eLearning that is stored the data (zip file) of your history (completed record) is reflected in the eduroECDIS program.



Difference between "close edurosECDIS window" and "Sign out function"

SIGN IN Offline
Please enter your User ID and Password.

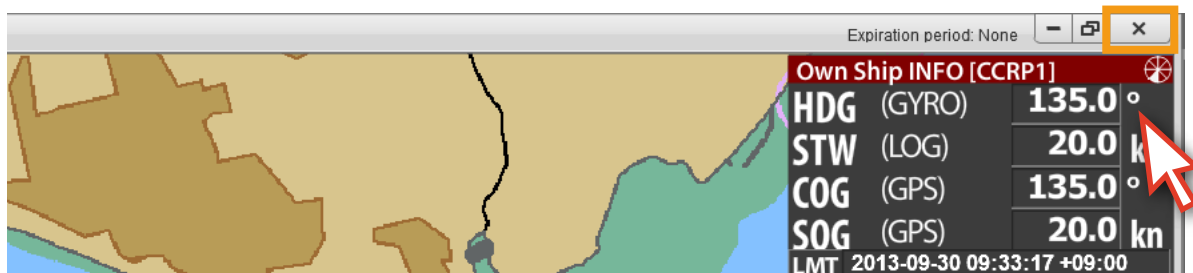
User ID:

Password:

Remember me

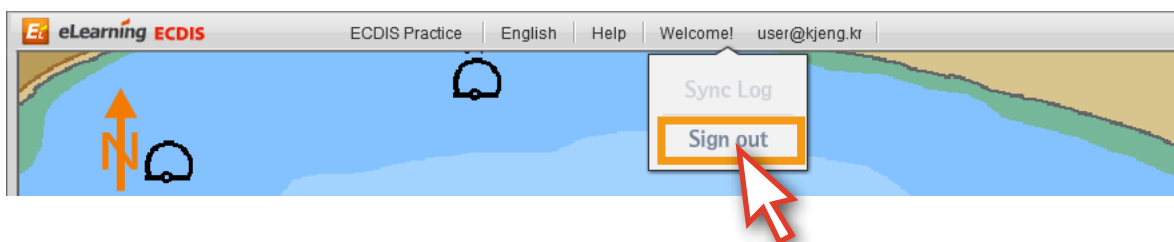
When you sign in with checking the box 'Remember me' and close the window

1. you don't have to enter your ID and Password again when you return to the site.



2. However, in case of sign out of the site, you have to enter the ID and Password again for security purposes when you return to it.

The former is more convenient while the later is more safe for you in terms of personal security.



SIGN IN Offline
Please enter your User ID and Password.

User ID:

Password:

Remember me

5. Learning

About the eduroECDIS Learning

Course Overview

The total course includes fourteen (14) chapters and Sixty-six(66) lessons by Topic.

Main features

The eduroECDIS is a blended learning with typically web-based training technologies and web-assisted learning tools. The client CBT program can be delivered online or CD-ROM, where a trainee can access to all the lessons and test regardless of online connections.

Lessons available in three languages

The lesson is available in three languages English, Japanese and Korean.

Interactive Multimedia Lessons

It is designed to increase the student's ability to interact spontaneously with interactive multimedia resources which are consisted of test, streaming audio and flash animation.

Contents Panel

The Contents Panel is a main content page where you can find all lessons and tests while keeping track of your course at the same time.

The lessons in sequence first, then available by random access

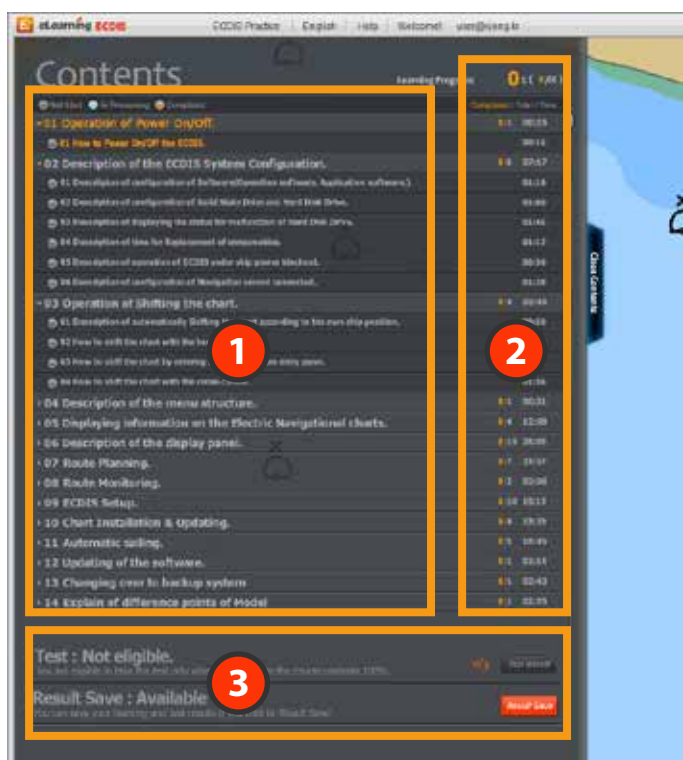
The lessons are arranged in a sequence to make learning a subject more effectively for the first time user, However, you can take any lessons randomly after completing all the lessons once.

Integrated quizzes and exercise

The integrated test runs on the client PC, including ten(10) written questions and ten(10) practices based on multiple-choices for 60 minutes in all. In case of the practices, answers are available only from the JRC demo ECDIS software already installed on together with the Client CBT modules.

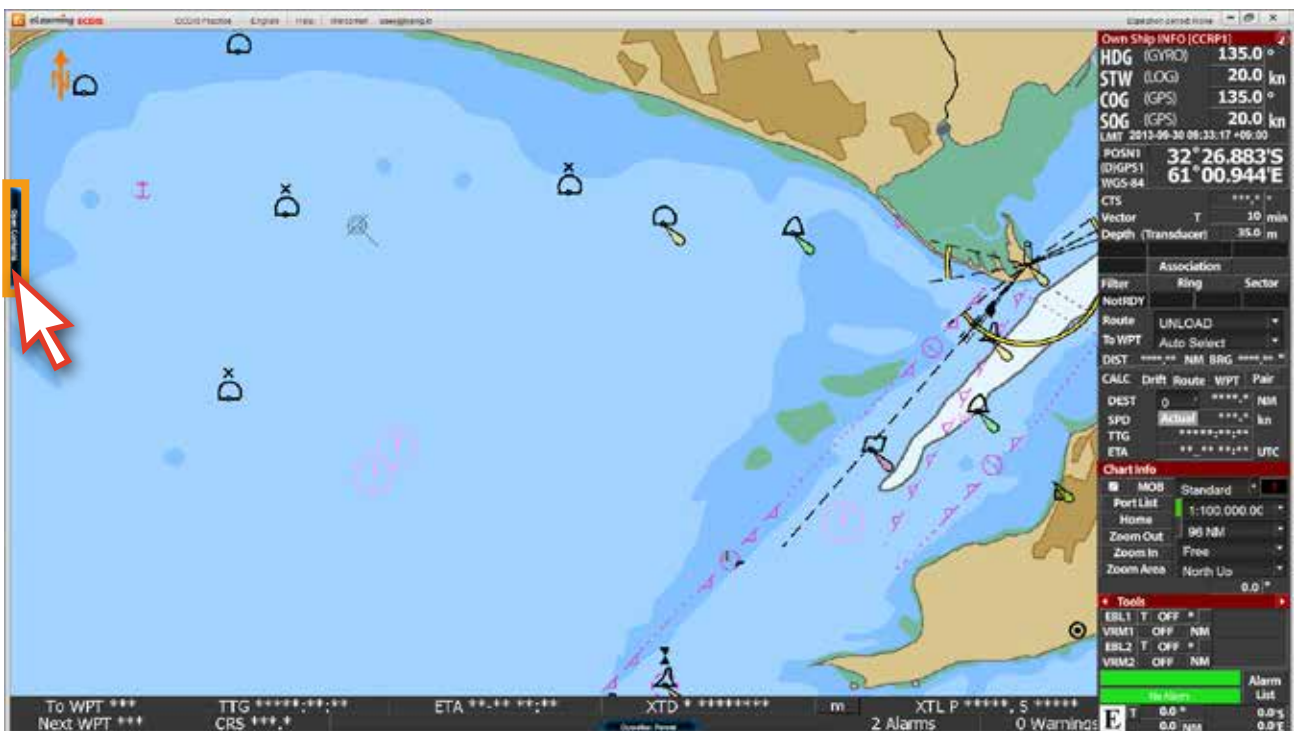
JRC ECDIS TST Certificate Issuance

A JRC ECDIS TST certificate is automatically to be issued under the name of JRC authorized trainer after successful completion of the course.

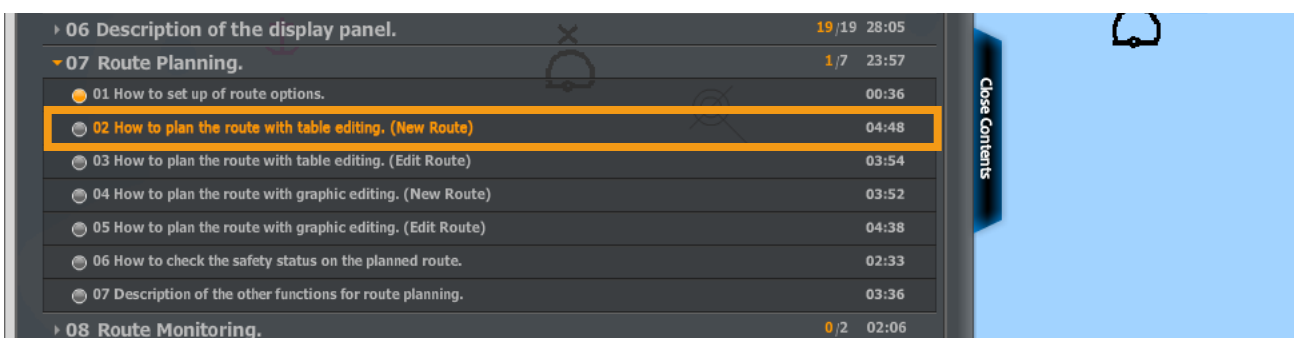
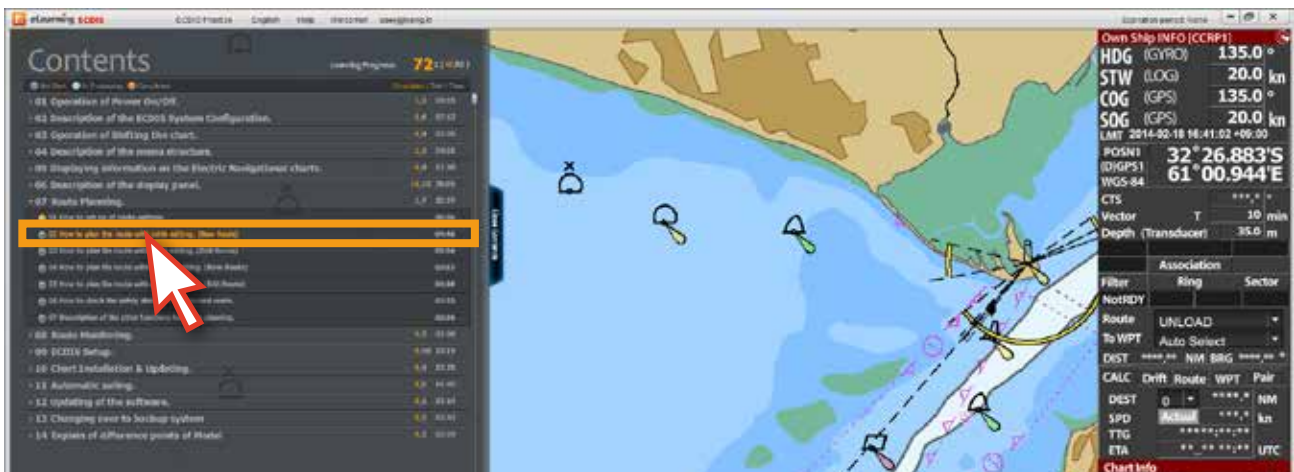


- 1 Contents page is a starting place for your lessons where you can find all lessons and tests at a glance, if a lesson is selected, the sub-lessons can be listed down.
- 2 It shows not only total number of lessons and time required but also how many lessons you have done and to go, furthermore It also let you monitor your learning progress with status-quo mark by the side end.
- 3 It can be only available after the completion of the lessons.

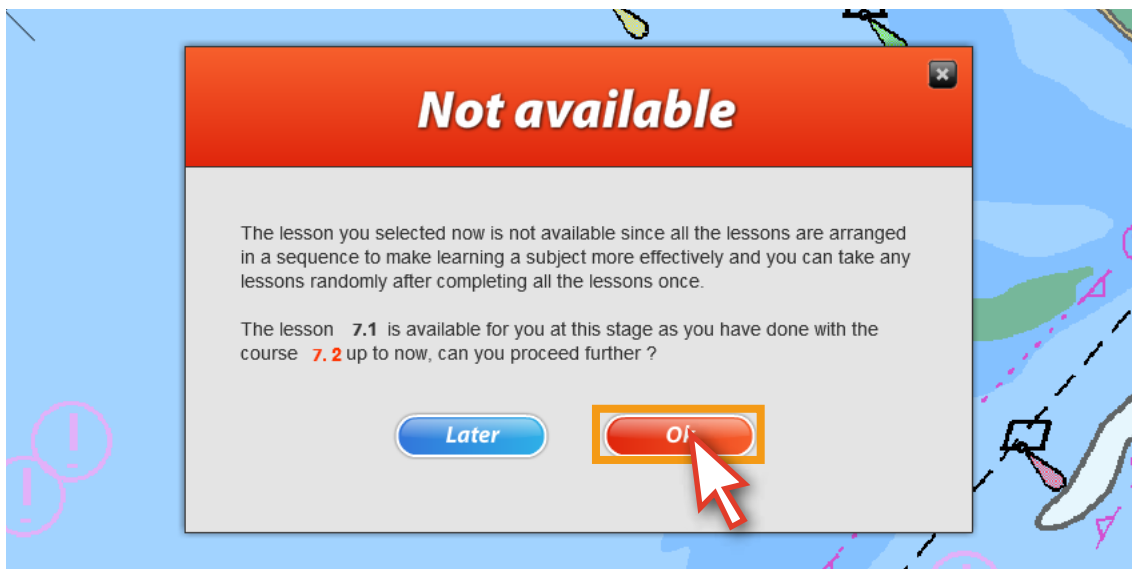
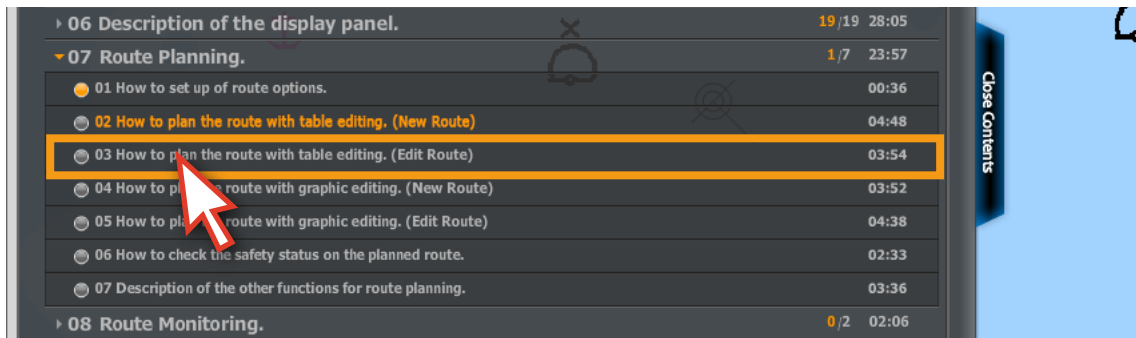
1. Run the edurosECDIS program and click 'Open Contents'.



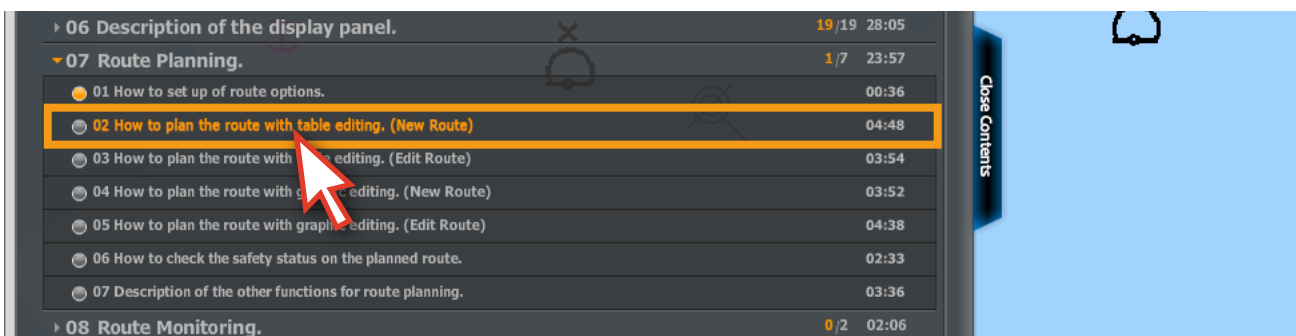
2. If the lesson in orange color is selected, then drop down list for the sub-lessons become visible. (This is an example of the 2nd lesson of Chapter 7 for the student who has done with the 1st lesson)



If you skip the next lesson 'No.2' in orange color and jump over to the lesson 'No.3', then it does not work and the following warning window appears promptly. If OK button is clicked on, you return to the next lesson 'No.2' again instead of the lesson 'No.3'.

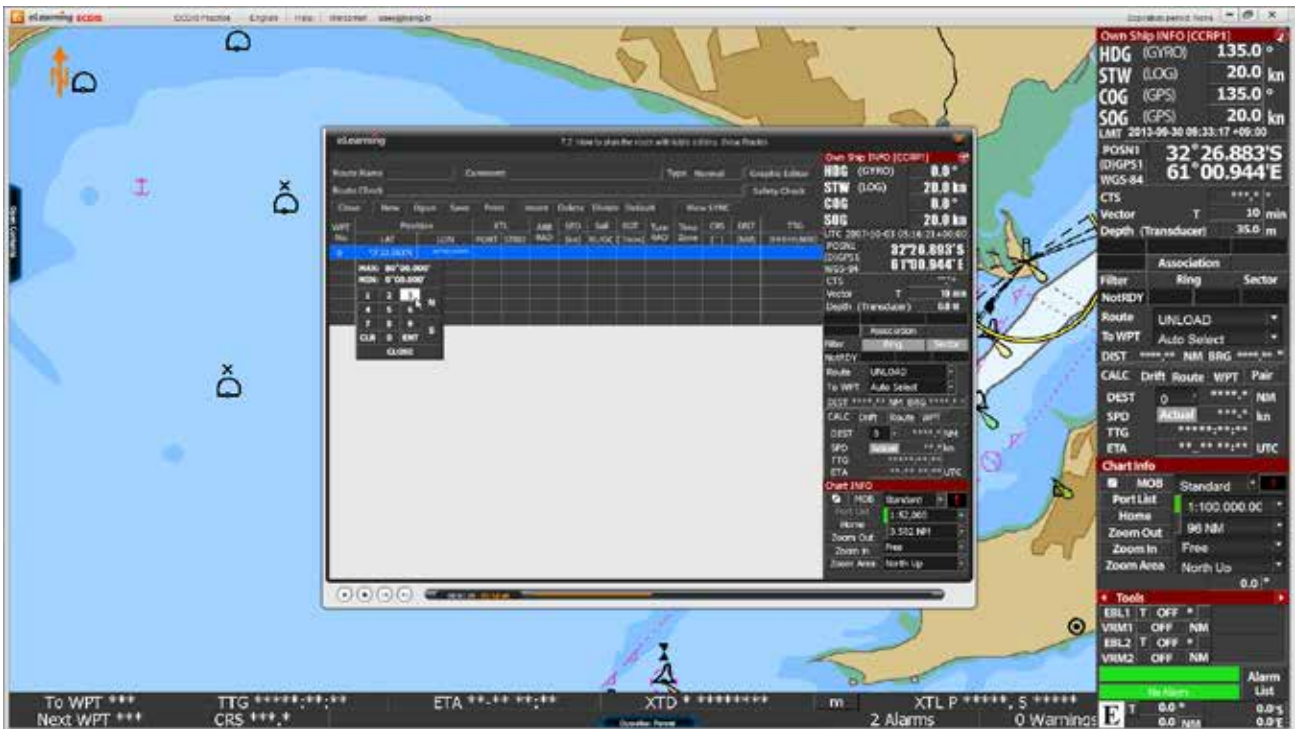


3. Select 'No.2' in orange color according to the order of procedures.



4. The relevant 'animation lesson' will start and you can watch it repeatedly.

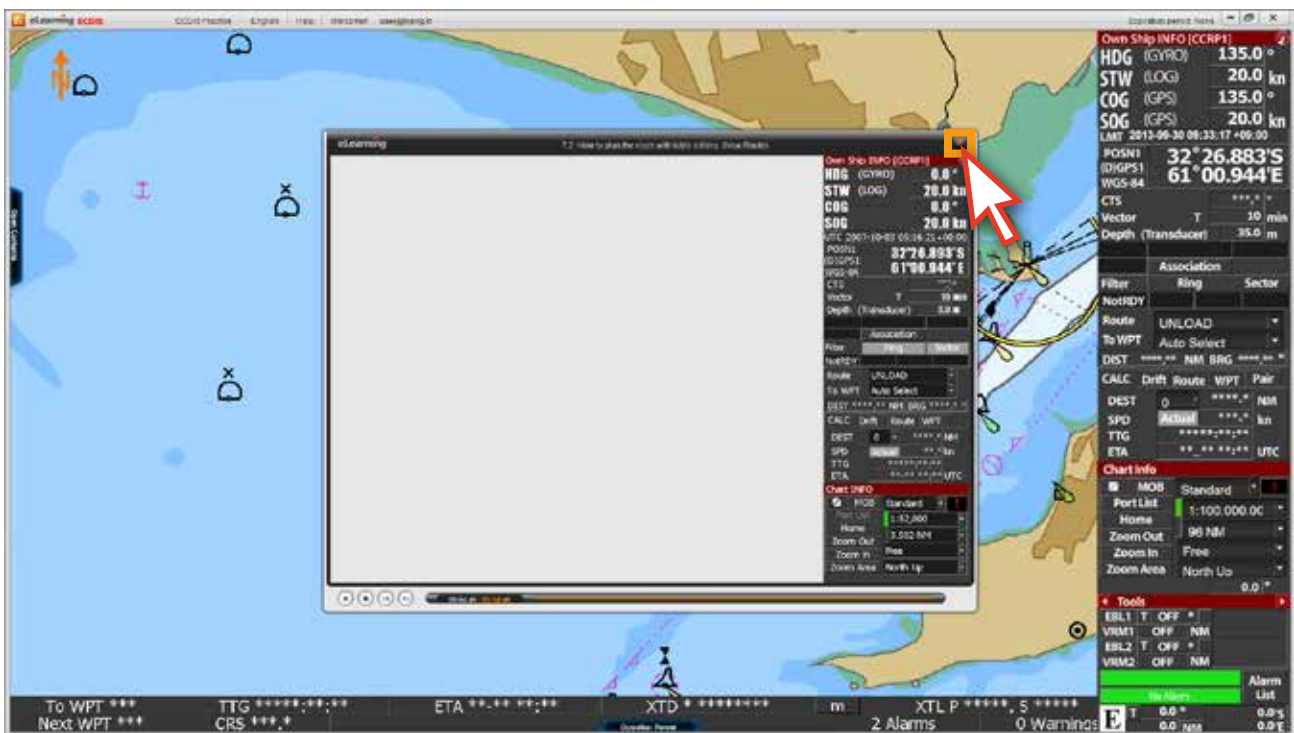
(Please note. These time control functions can be activated from the second time. If it is your first time to take the course, you can't use these functions. Please watch the content from the first to the end thoroughly.)



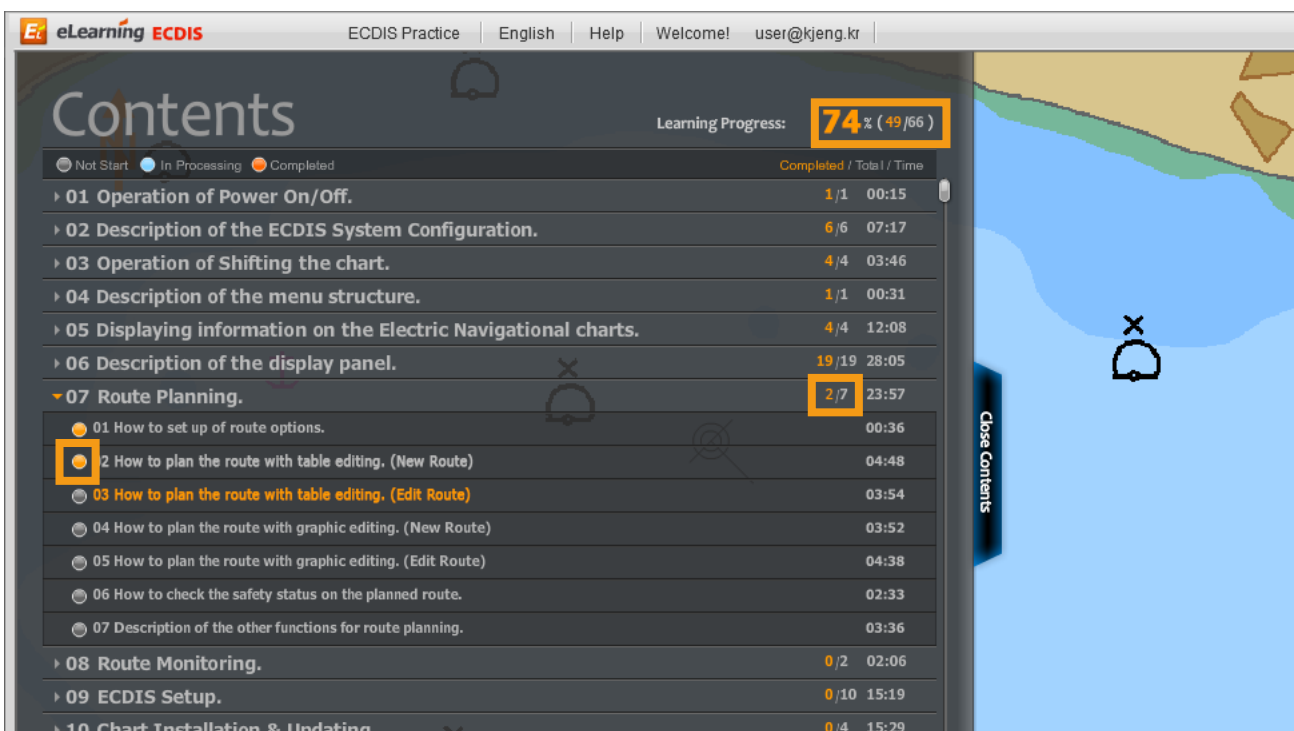
5. In the lesson you can also see the 'yellow dialogue box' with a detailed explanation on the 'pop-up window menu' by mousing over.



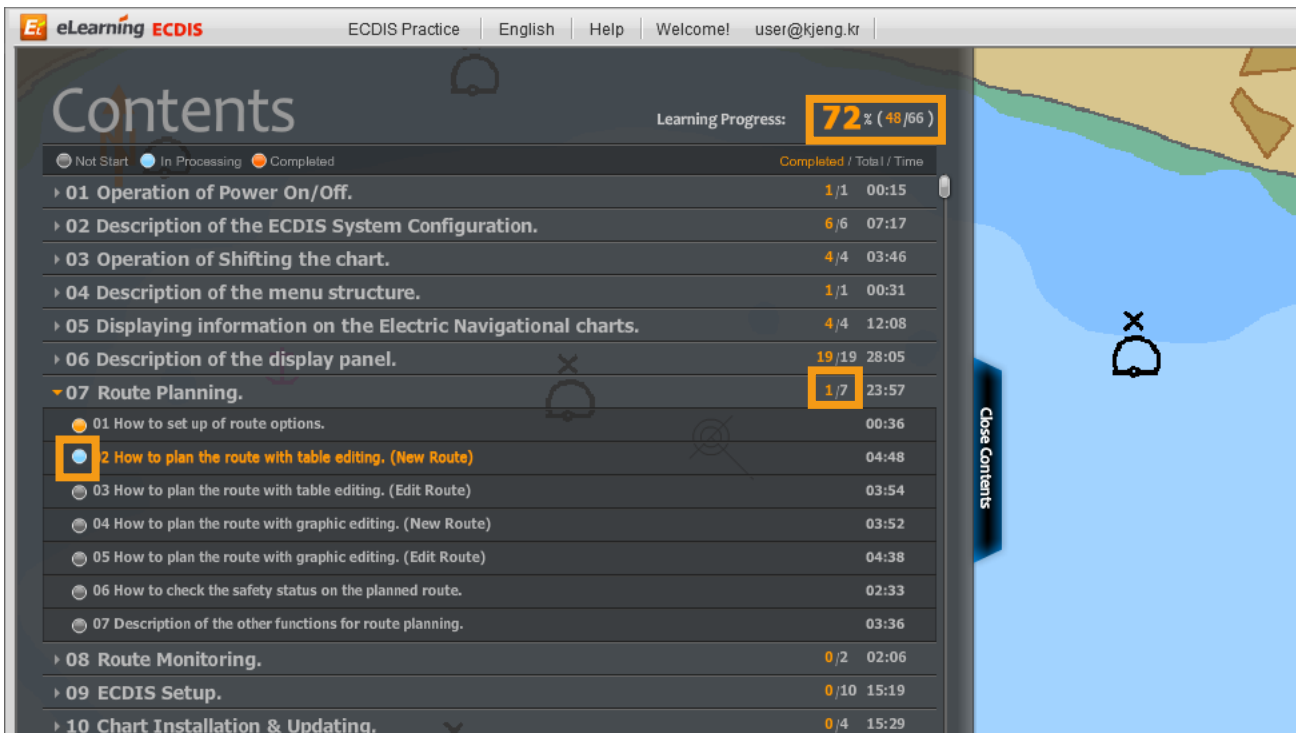
6. When the animation lesson is finished, click the 'X' button to close.



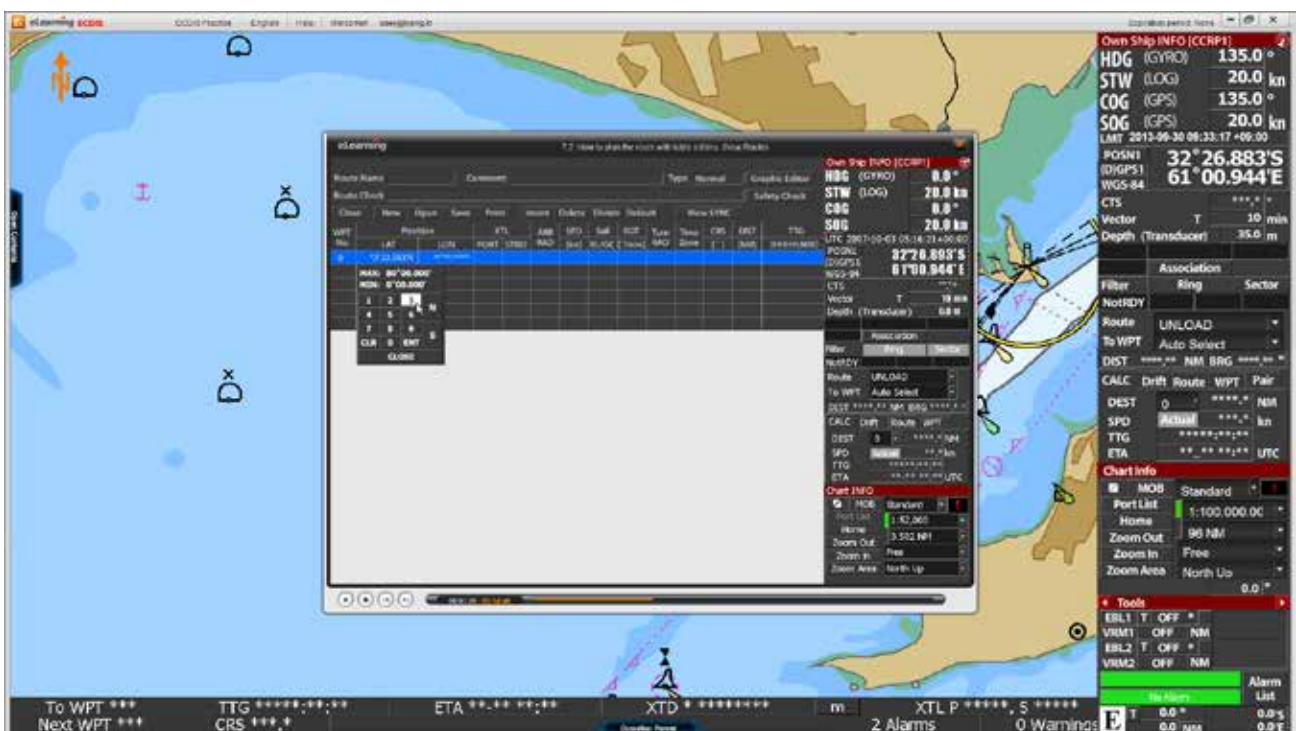
7. You can check your 'studying status' at the 'Contents list window' by the changing color of the small circles (Gray, Blue and Orange) and the learning progress percentage.



8. A 'Blue circle' means that you haven't completed the lesson and should take it again. An 'Orange circle' means that you have completed the lesson and it is reflected by the learning progress percentage growing.



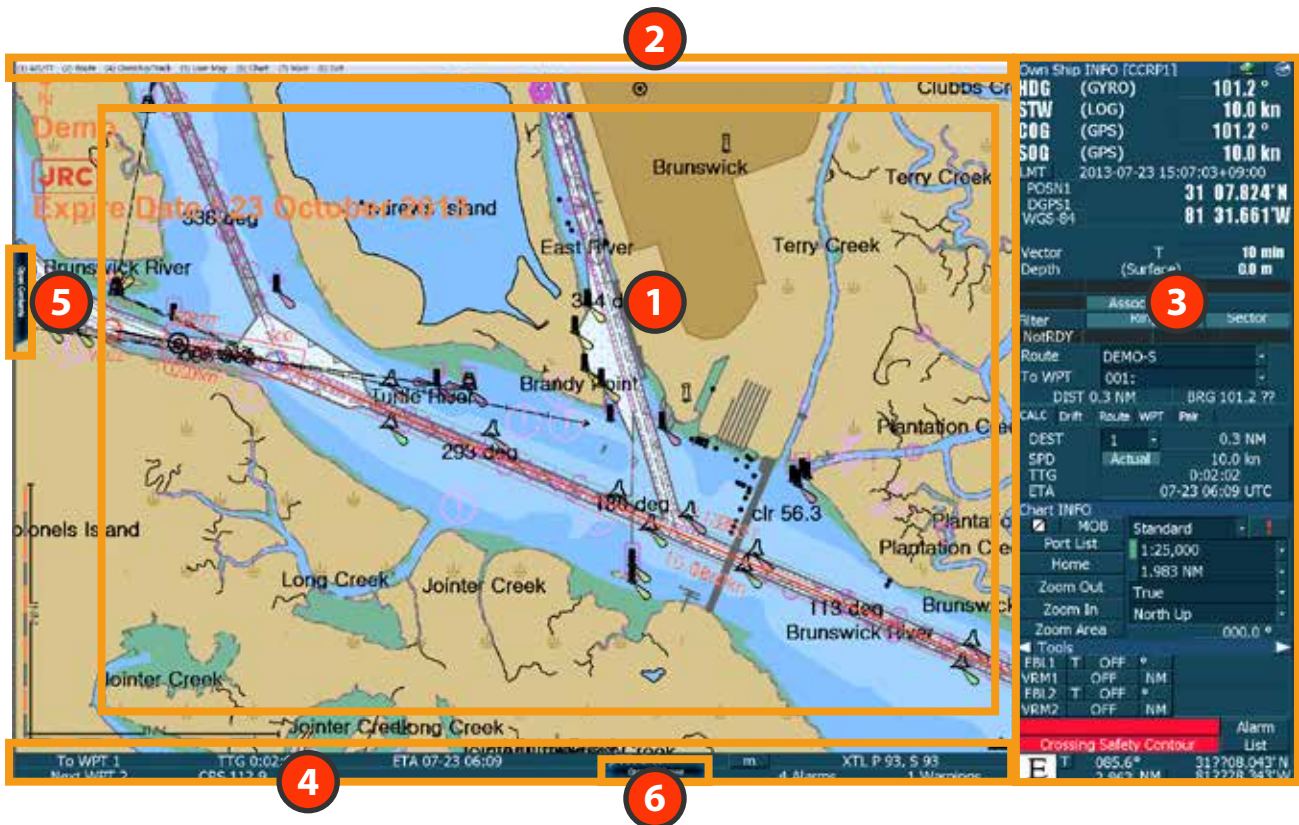
9. If you haven't completed to listen a lesson, you should take it again from the first and finish it.



6. Practice

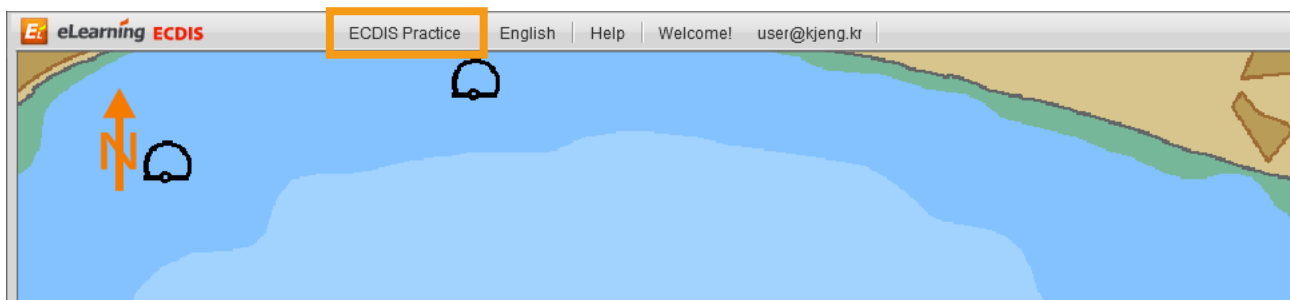
Practice mode configuration

- It is a demo software with 90 day trial periods for practice purpose only.



- 1** Chart Display
It displays the electronic chart stored on hard disk. (S-57, C-MAP and/or ARCS Charts)
- 2** Menu Title Bar
When you move the cursor top of the screen, the menu title bar opens to allow menu operation.
- 3** Display Panel
It displays various navigation information for sailing including alarms and buttons.
- 4** TCS Bar
It is information bar for auto sail.
- 5** Contents Panel
It is a main content page where you can find all lessons and tests and help you to keep track of your courses with status quo mark.
- 6** Operation Panel
It describes the name and function of each part on the operation panel.

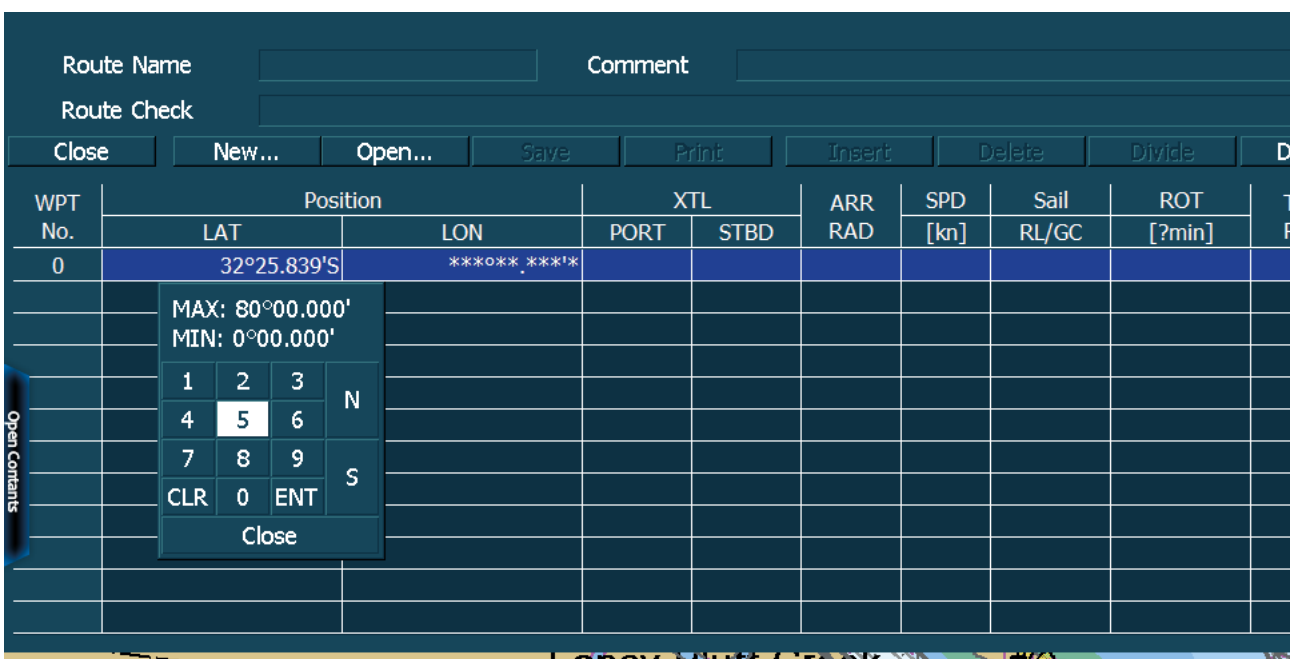
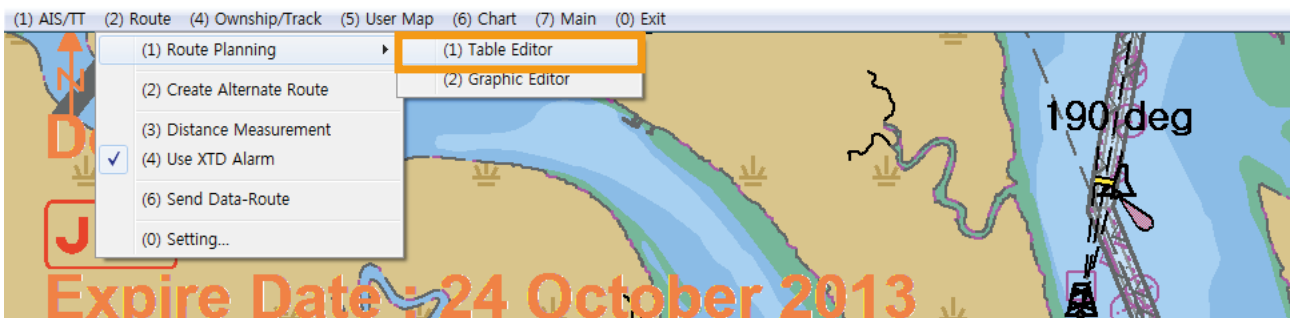
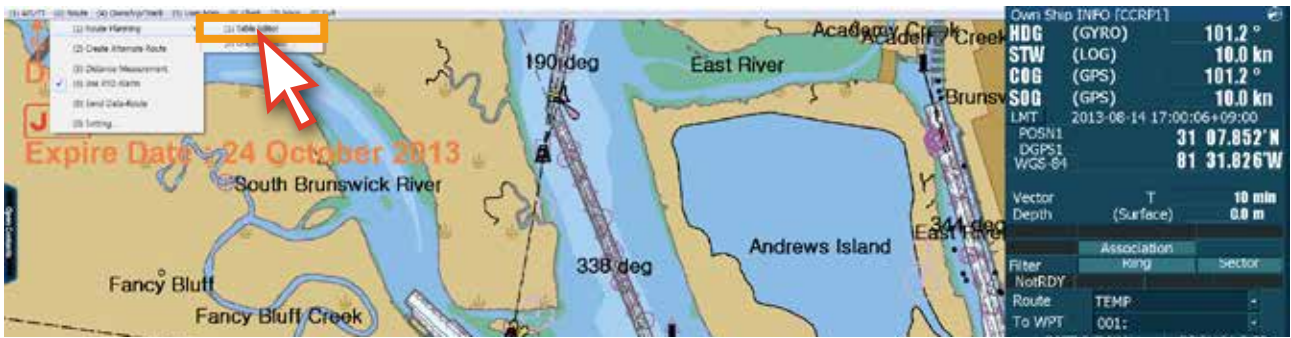
1. Click 'ECDIS Practice' at the top of the screen.



2. The program mode will be changed to 'ECDIS practice mode'.



3. You can practice what you learned earlier in the animation lesson.



4. You can also open the 'animation lesson' content over the ECDIS practice program to refer to the explanation and practice at the same time.

The screenshot displays the ECDIS software interface. On the left, a 'Contents' menu lists various topics, with '10 How to plan the route with the editor (New Route)' highlighted and a red arrow pointing to it. The top panel shows a route planning table with columns for WPT No., LAT, LON, XTL, AIR, SPO, Sail, ROT, Turn, Time, CRS, DEST, and TTG. The center panel shows a map view with a route plotted through a waterway, including labels for 'Terry Creek', 'Plantation Creek', and 'Brunswick River'. The right panel contains 'Own Ship INFO' with parameters like HDG (101.2°), STW (10.0 kn), COG (101.2°), SOG (10.0 kn), and position coordinates (31 07.857°N, 81 31.854°W). Below this are 'Vector' and 'Depth' information, and a 'Filter' section with 'NotRDY' and 'Route DEMO-5'.

The screenshot displays the ECDIS software interface. The top panel shows a route planning window with columns for WPT No., LAT, LON, XTL, AIR, SPO, Sail, ROT, Turn, Time, CRS, DEST, and TTG. The center panel shows a map view with a route plotted through a waterway, including labels for 'Little Satilla River', 'Long Creek', and 'Jointer Creek'. The right panel contains 'Own Ship INFO' with parameters like HDG (113.0°), STW (10.0 kn), COG (113.0°), SOG (10.0 kn), and position coordinates (31 07.147°N, 81 29.544°W). Below this are 'Vector' and 'Depth' information, and a 'Filter' section with 'NotRDY' and 'Route TEMP'.

5. When you've finished practicing, click the '(0) EXIT' button to go back to the 'edurosECDIS program'.

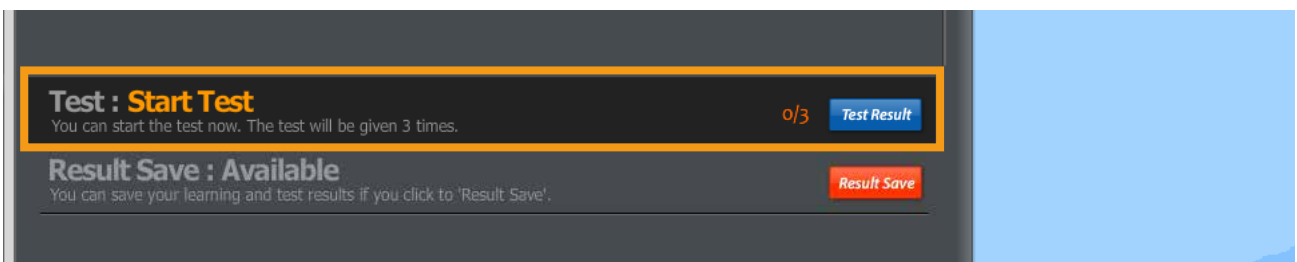
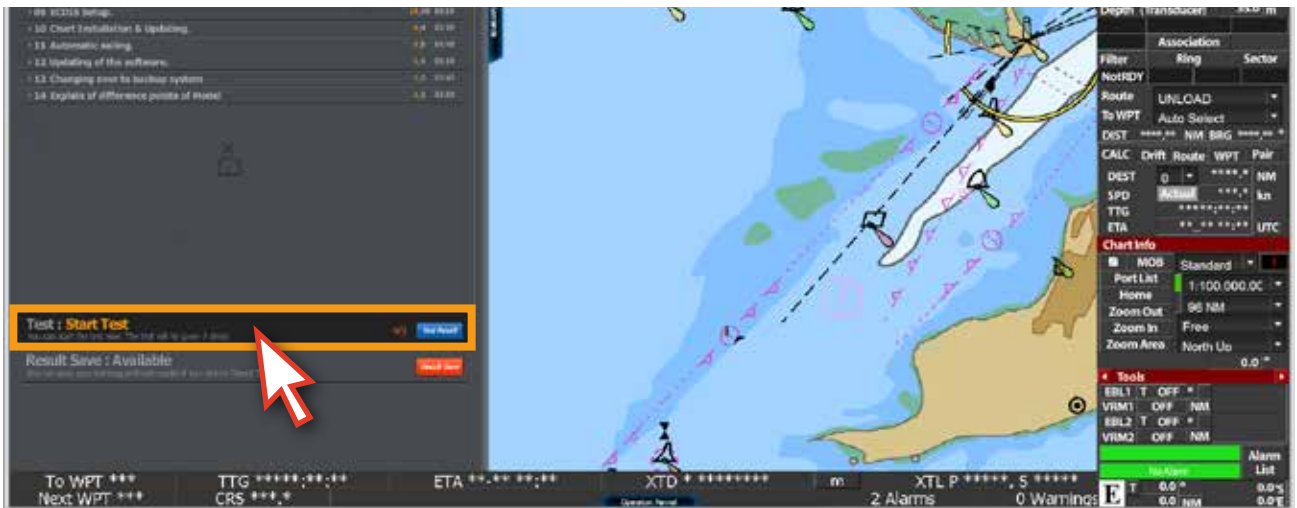
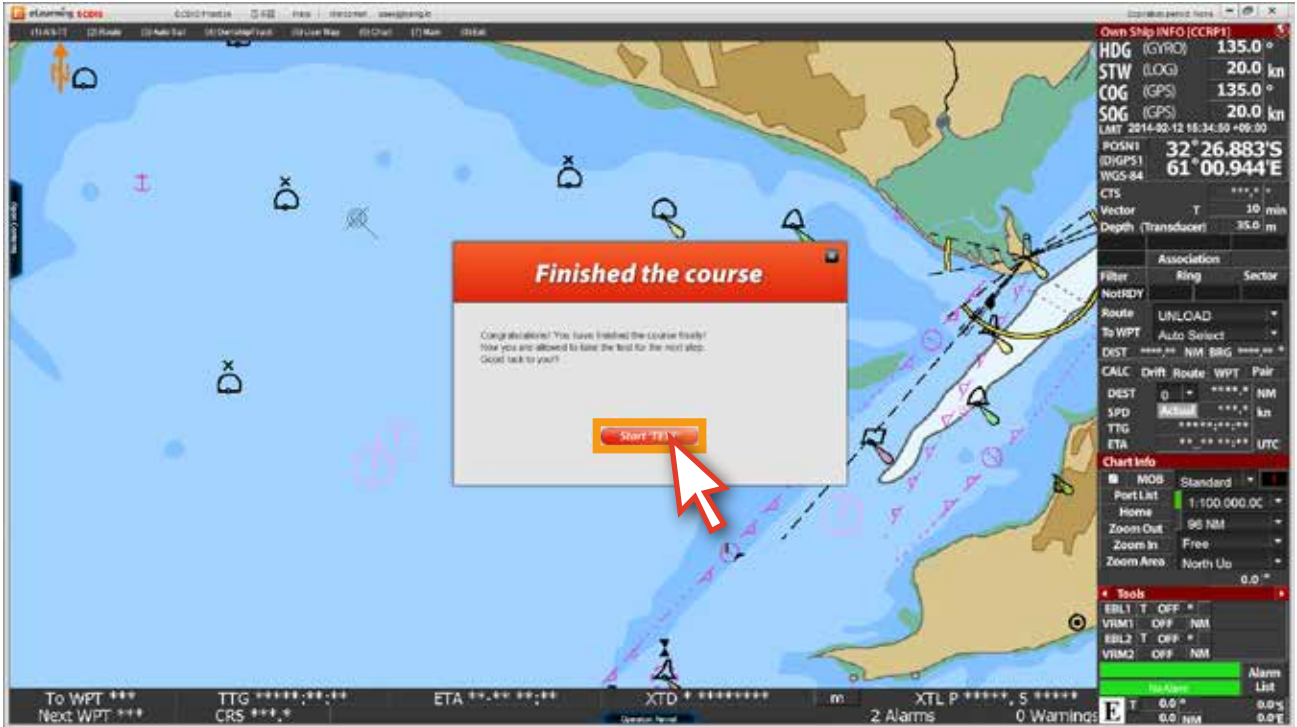


6. Now you come back to the edurosECDIS main page from the practice program.

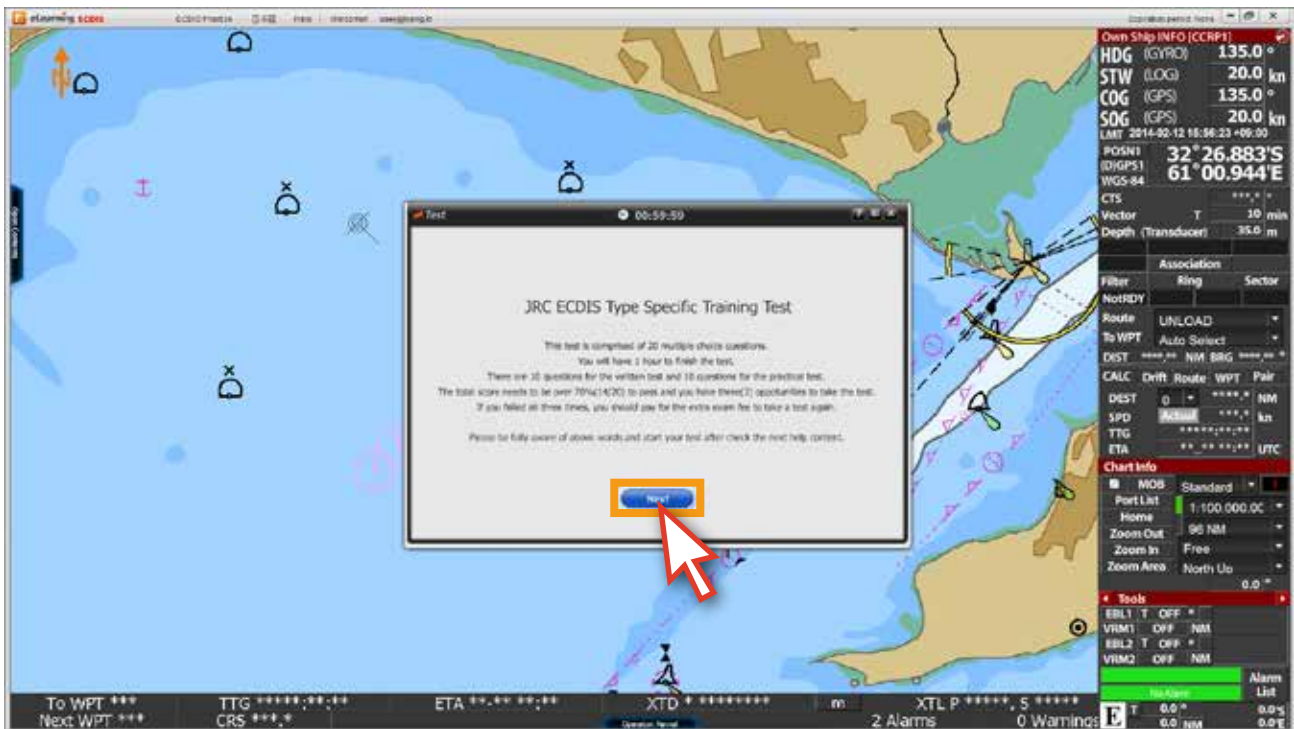


7. Test and Evaluation

1. When you complete the Course Progress, you are eligible to take the 'TEST'.
Click the 'Start TEST' button of the pop-up window, or click the 'Open Contents' and activated 'Start Test Bar'.



2. The 'Test page' is started. Please read the instruction in the popup window and click the 'Next' button to move on.



3. Please refer to below for details of above messages.

JRC ECDIS Type Specific Training Test

This test is comprised of 20 multiple choice questions.

There are 10 questions for the written test and 10 questions for the practical test.

You have one(1) hour for the test.

You have three chances for the test per one license, and you need to score more than 70% to pass the test.

If you fail the test three times in a row, you should pay for an extra fee in order to take a test again.

Please be careful with your test and Good Luck !!



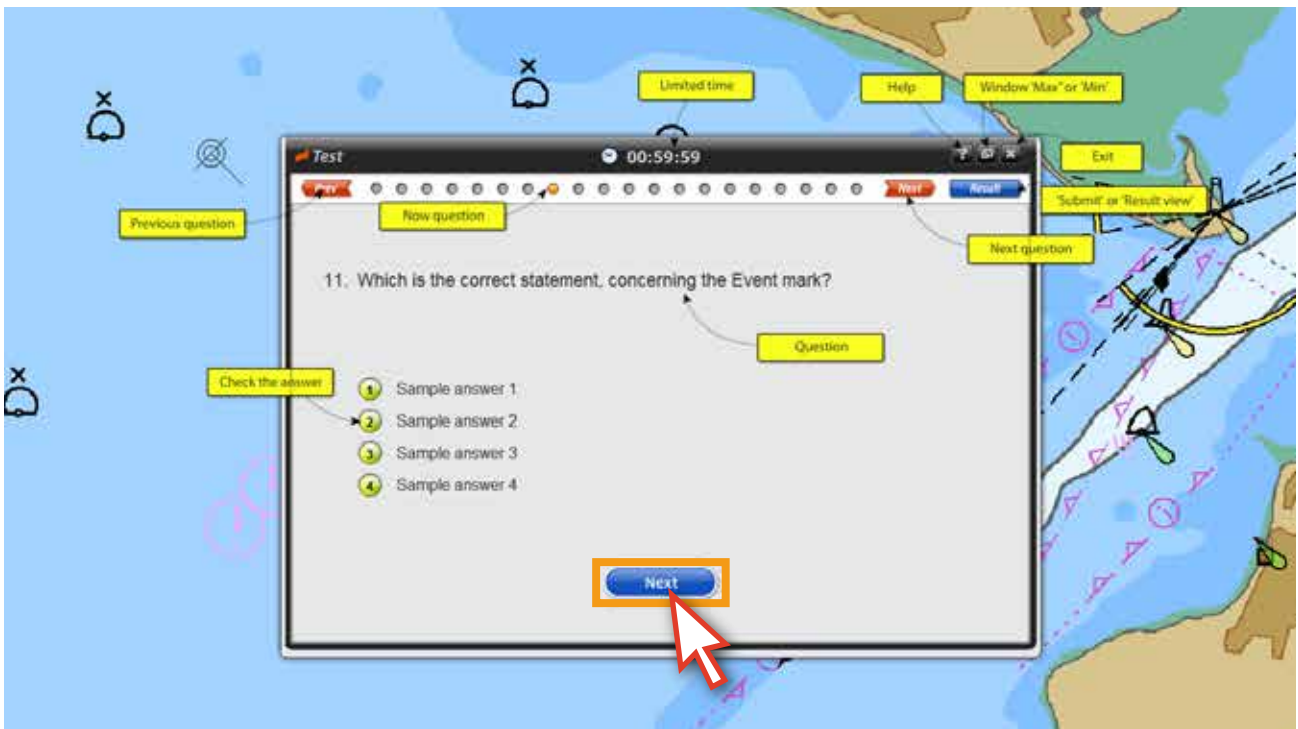
* CAUTION

If you put an end to a test when there is more than five(5) minutes left for the test, you will lose all answers you checked, and you should start from the first question without losing any test chance.

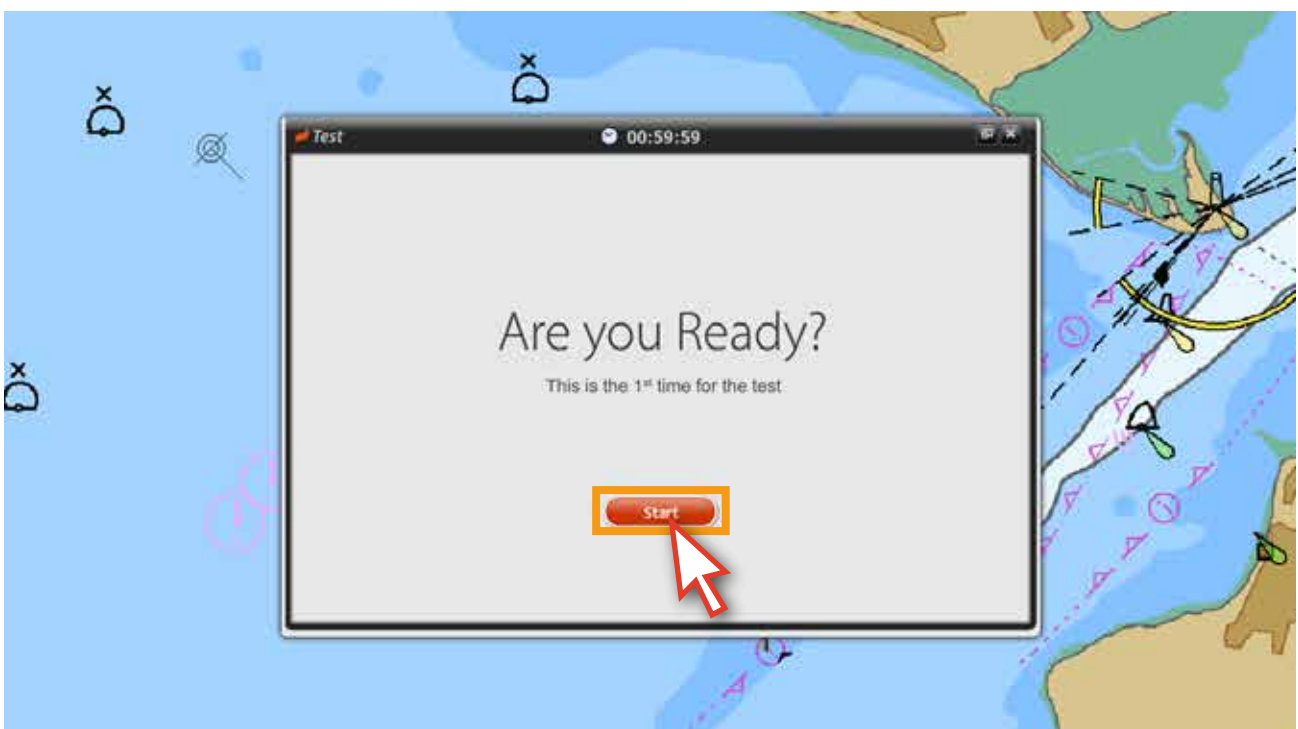
If you put an end to a test when there is less than five(5) minutes left for the test, you will lose all answers you checked one valuable chance will be thrown away accordingly.

If you exceed the time limit, you can't pass the test.

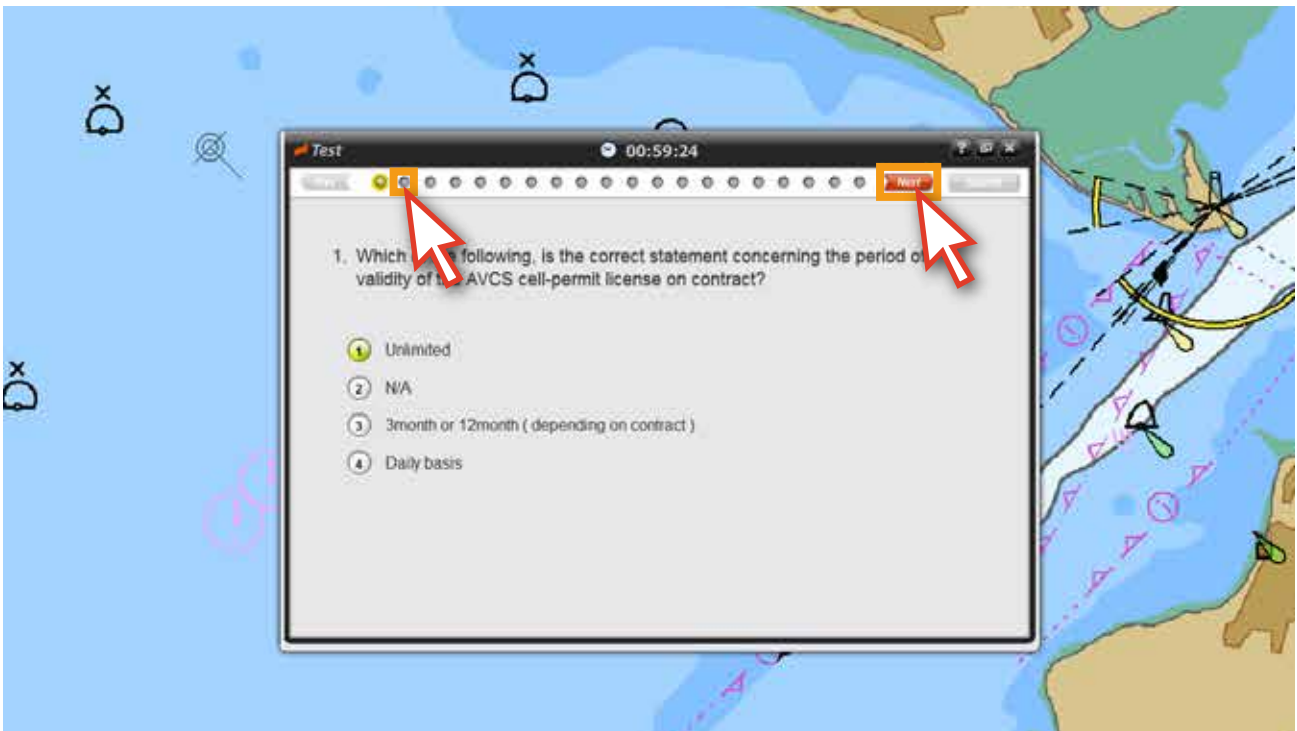
4. You will see the 'test instruction' first.
Please learn how to test carefully and click the 'Next' button.



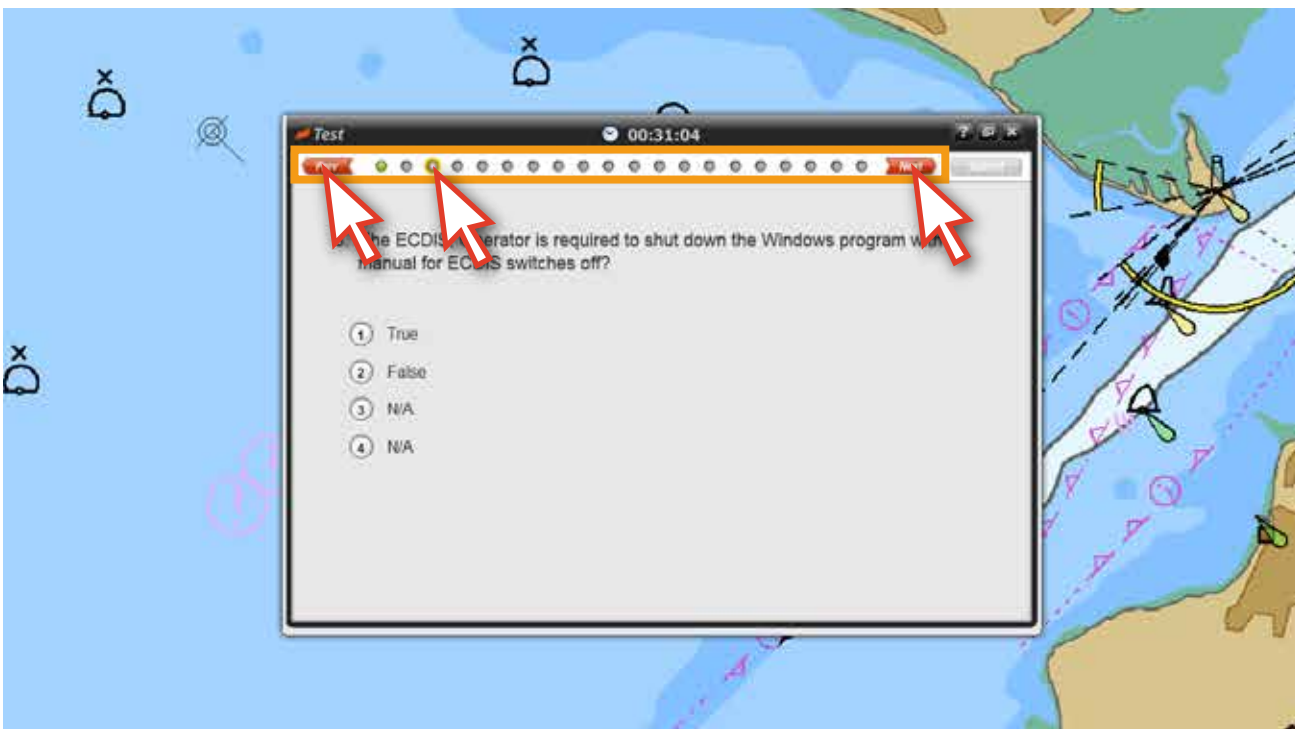
5. When you are ready, start the test.



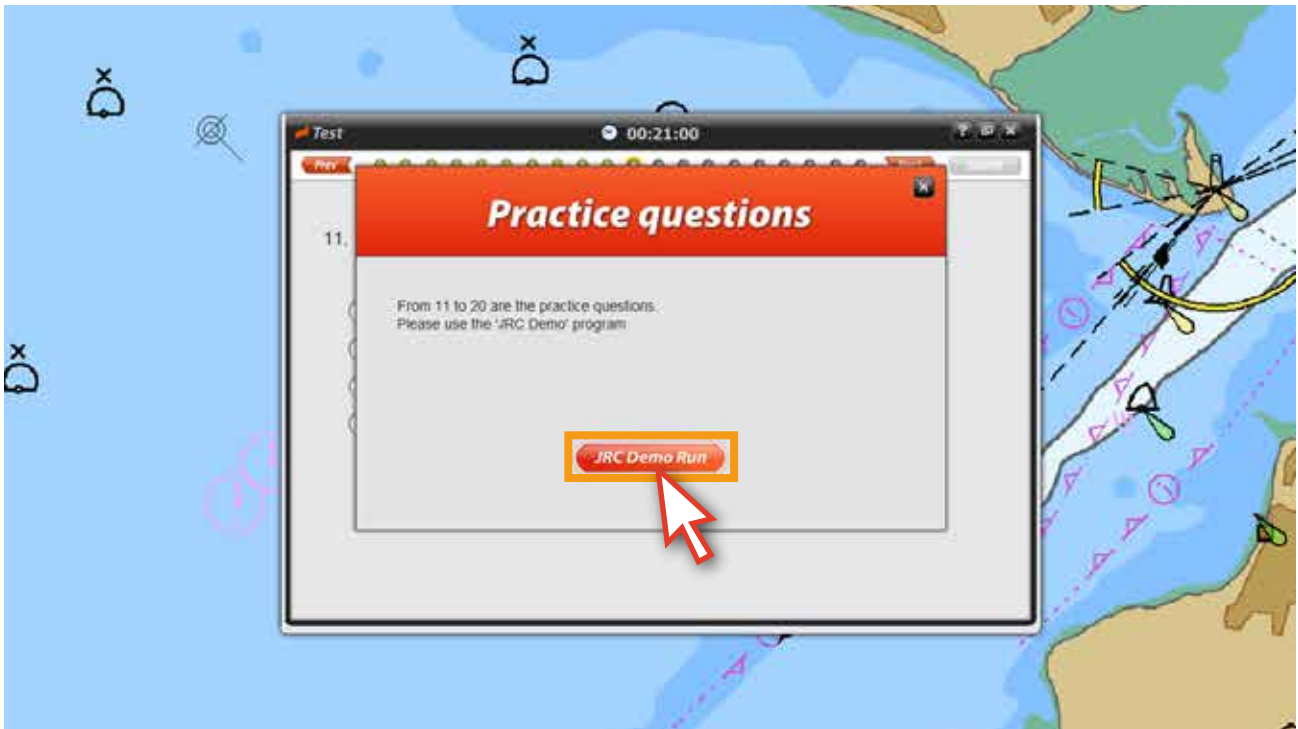
6. Read the question carefully and choose 'one answer'. The selected answer number color is changed to green. When you want to move on to the next question, click the 'Next' button or the 'next button' on the top of the window.



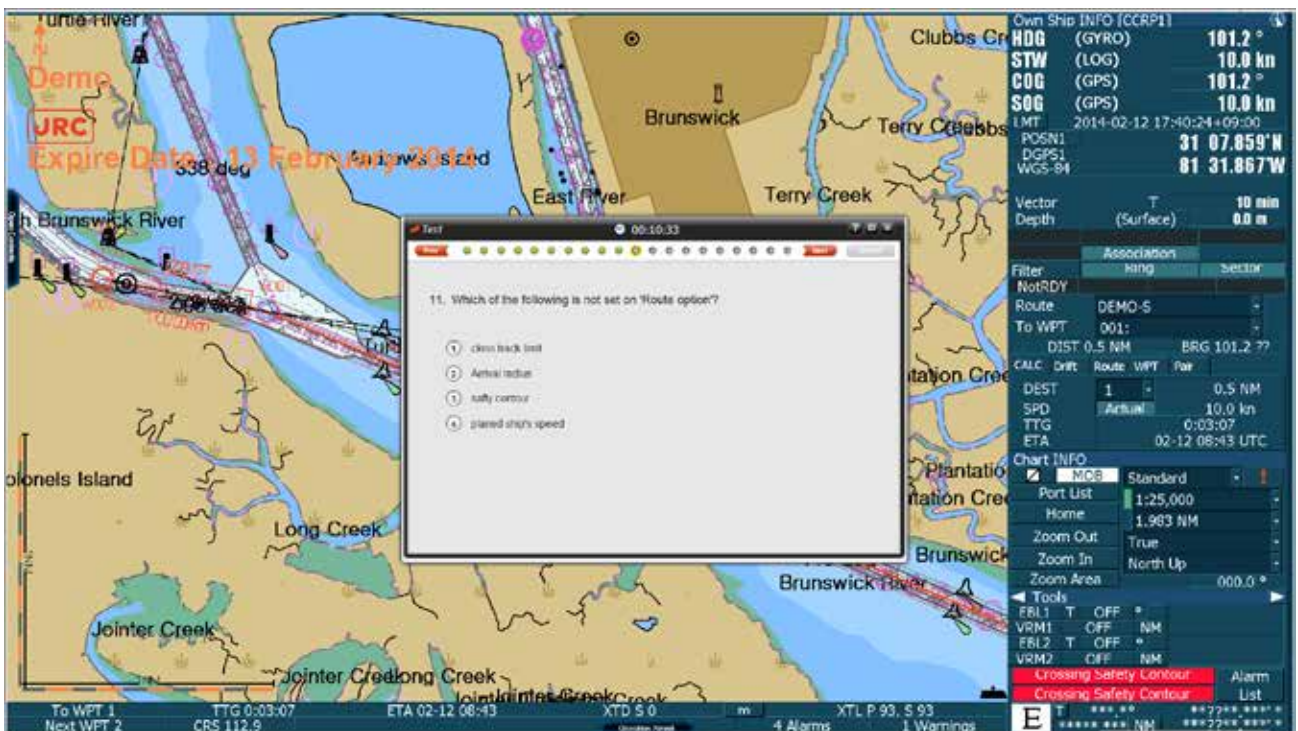
7. If you want to revise your answers, use 'Prev' or 'Next' buttons to move to the other questions. Or you can go to the question page which you want to revise directly in one time by clicking the 'buttons' on the top of the window.



8. When you reach to the 'question 11', a practical test related pop-up message will be appeared. The practical test is from question 11 to 20. Click the 'JRC Demo Run' button.

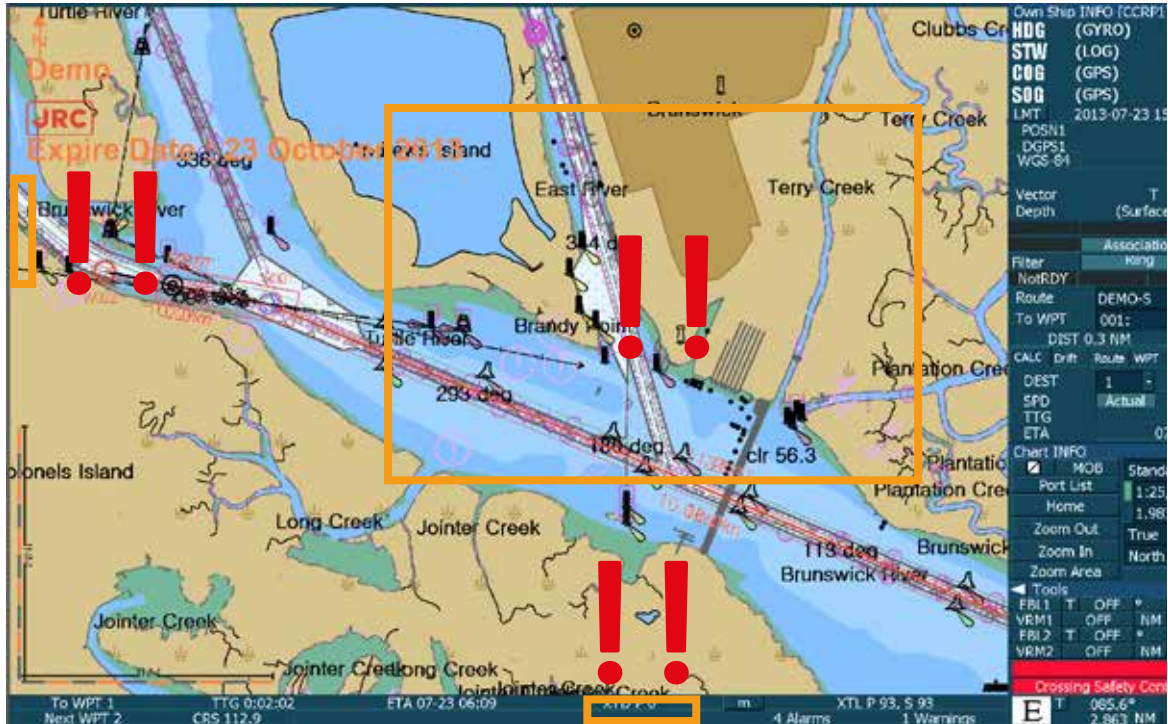


9. The 'Demo mode program' will be started. From now on, you will solve the questions using this demo program.

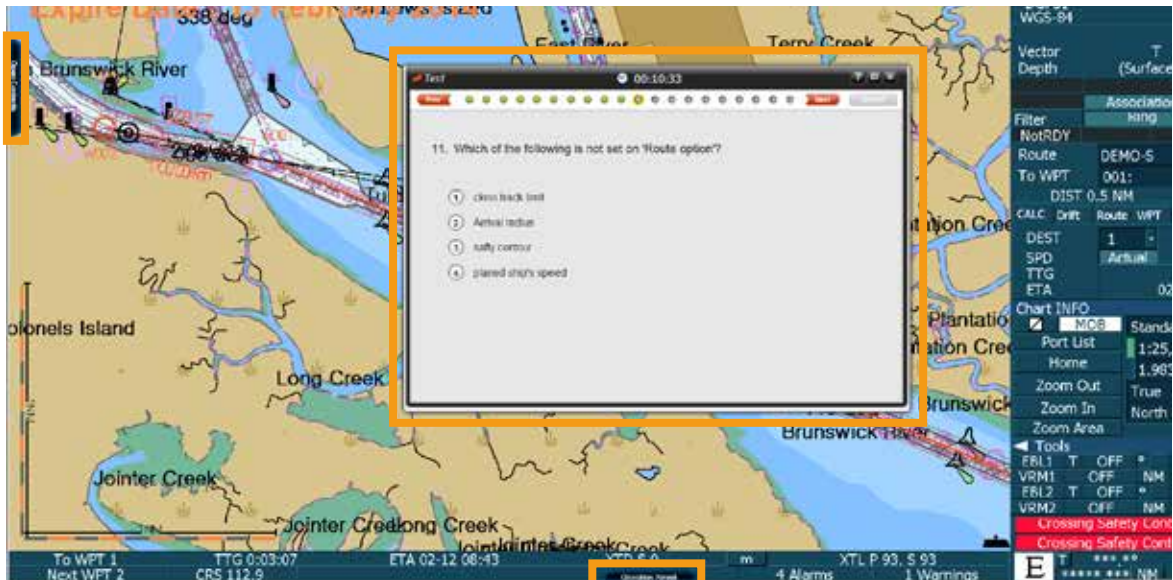
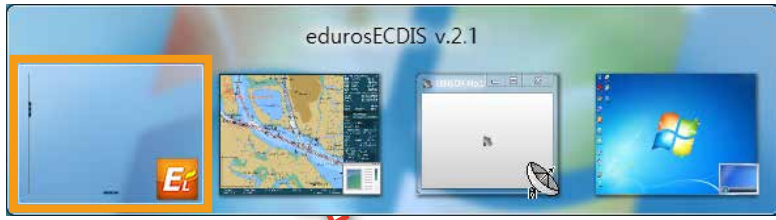




When the menu of test pop-up window and its menu is invisible after switching to the practice mode

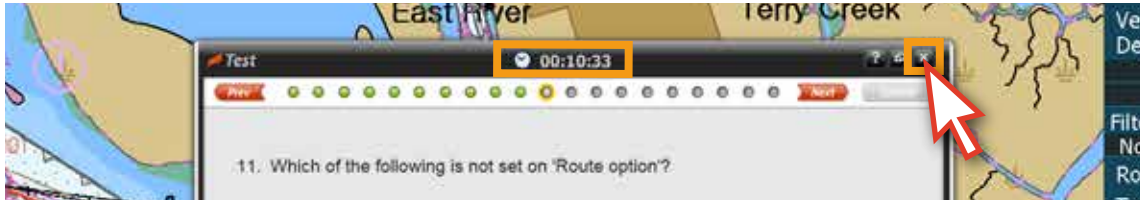


Hold down 'Alt' Key and press 'Tab' Key once, then The menu show up below, you can switch to eduroECDIS v2.1 by pressing and releasing 'Tab' key while holding down 'Alt' key.





Force Quit of the Test when there is more than 5 minutes for the test



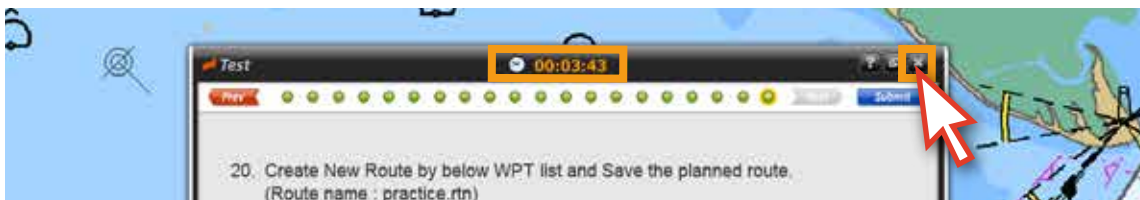
The following warning message shows up.

All your answers until now will be gone completely and you have to take the test again from the beginning.

However please be noted that the number of the chances you have for the test still remain the same as before.



Force Quit of the Test when there is less than 5 minutes for the test



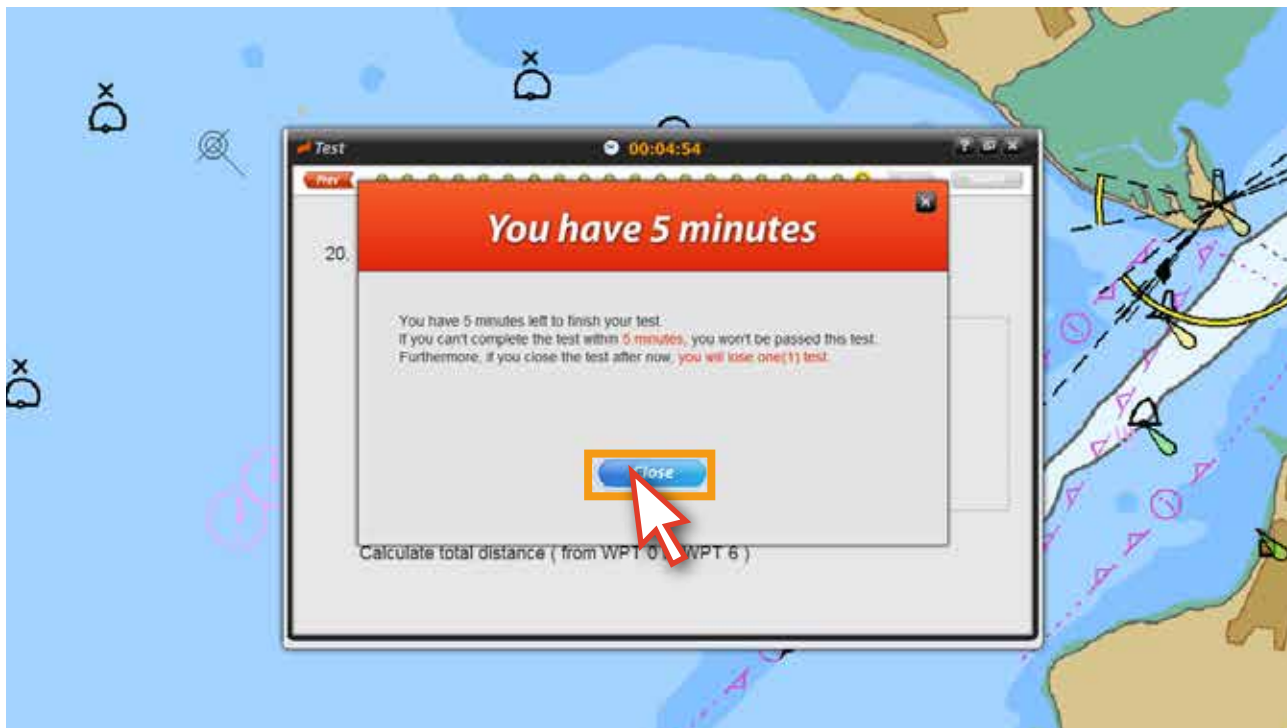
The following message shows up.

All your answers will be completely gone and one test chance will be lost also, and if you want to try it later, you have to take it from the beginning again.

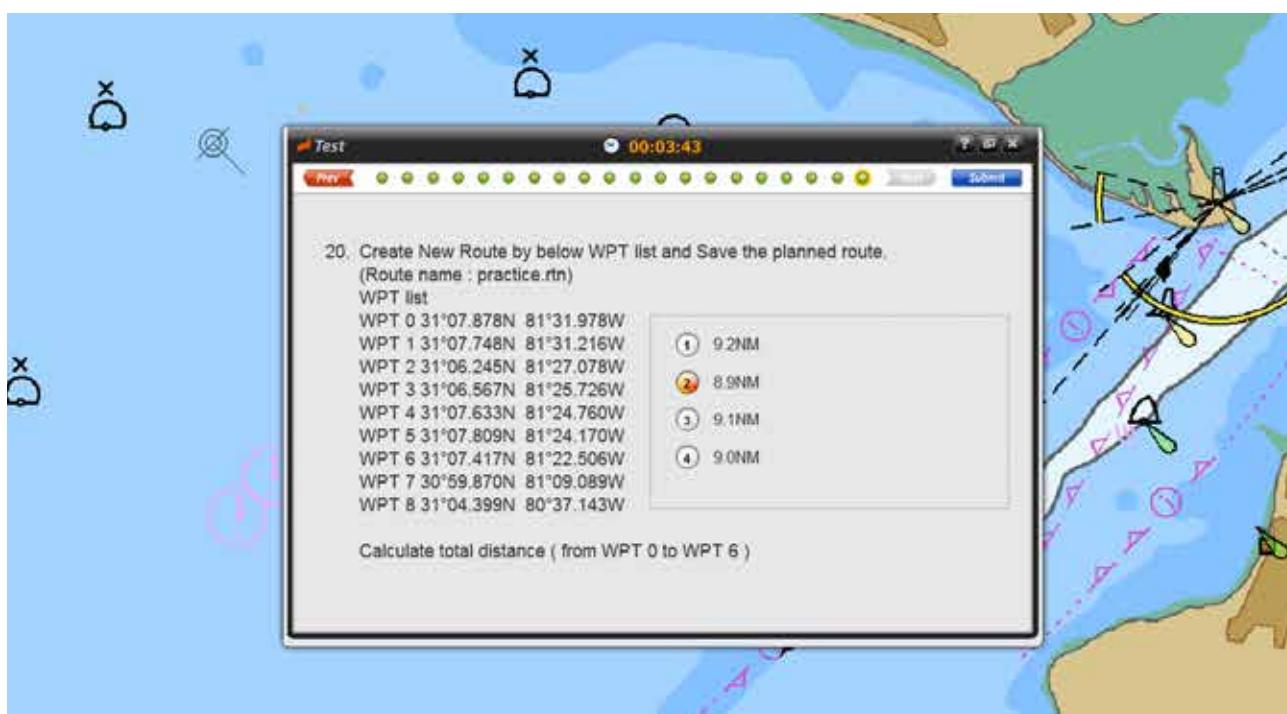


11. When you have 5 minutes left, below message will appear.

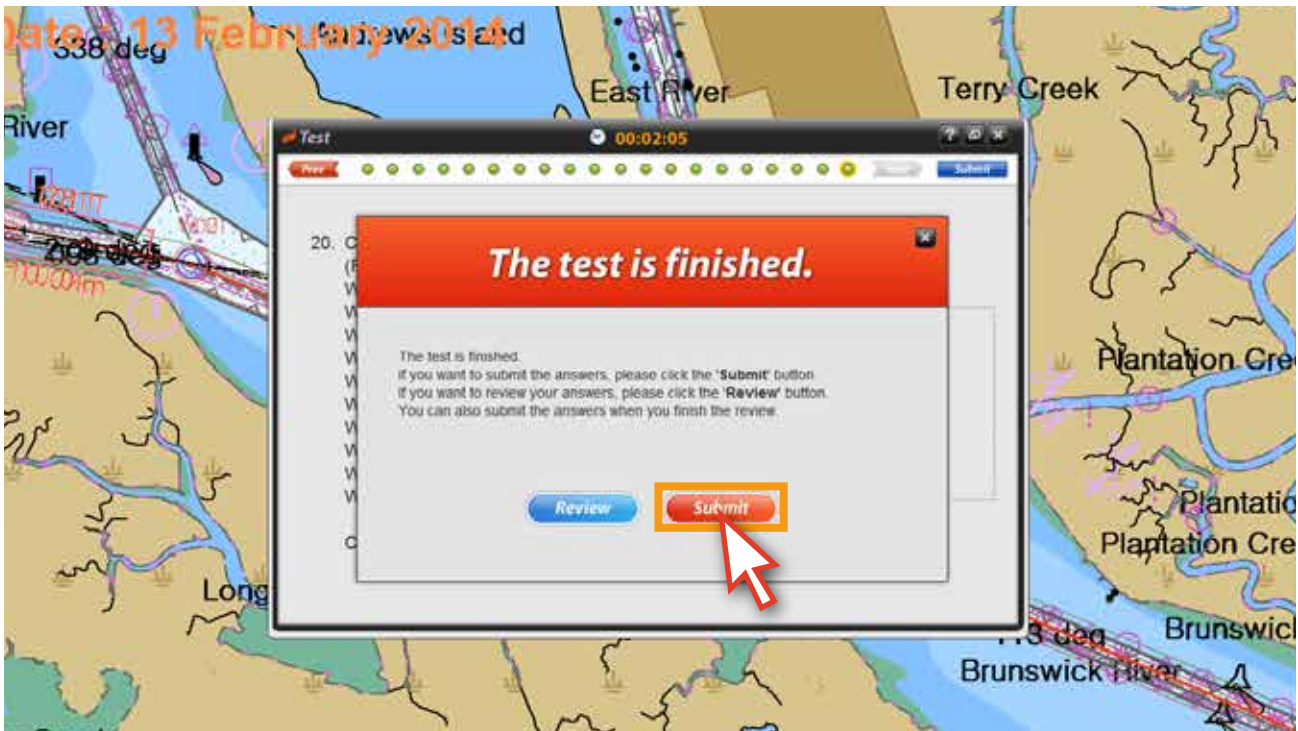
You can not close the test from this moment manually and if you can't complete the test within the left 5 minutes, you won't pass the test. And You will lose one (1) test chance. Click the 'Close' button when you finish reading the message.



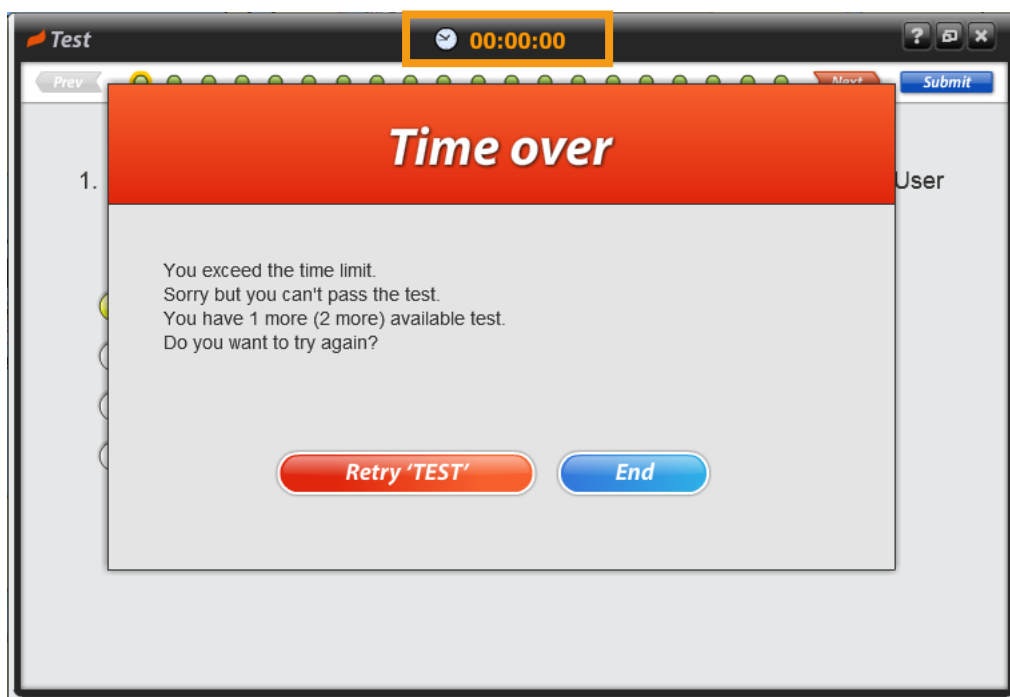
12. Please try to complete the test before its time limit.



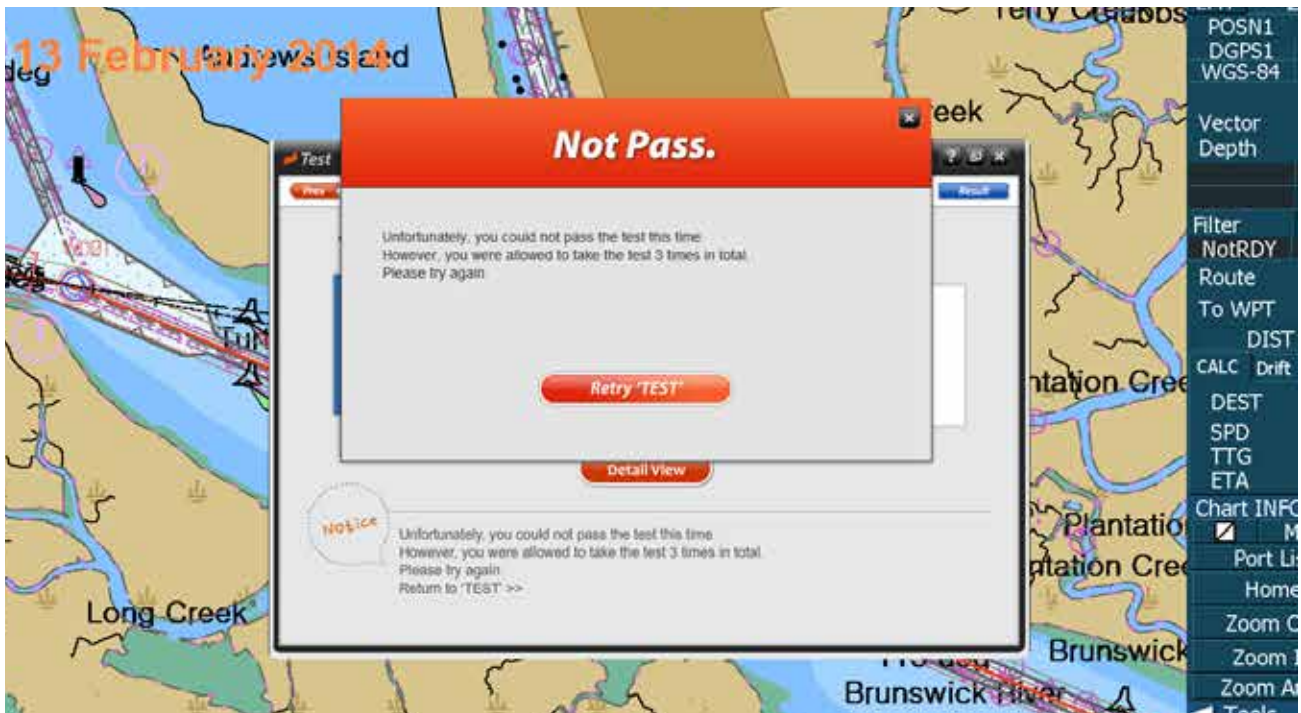
13. When you answer all questions, below message pop-up will appear.
Click the 'Review' button to modify your answers, or Click the 'Submit' button to complete the test.



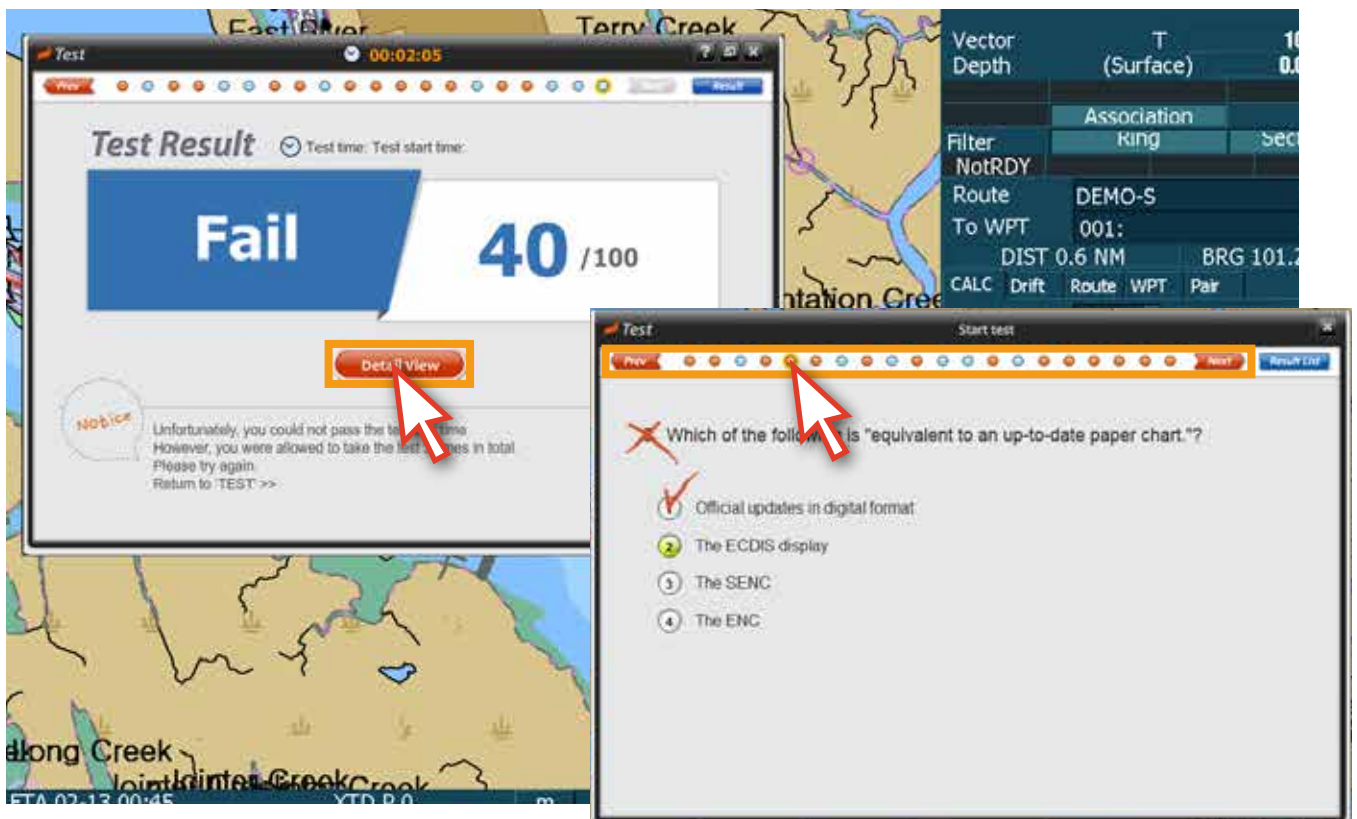
Unless you make it within the time, The following message shows up, It means that you fail this test and one test chance will be lost accordingly.



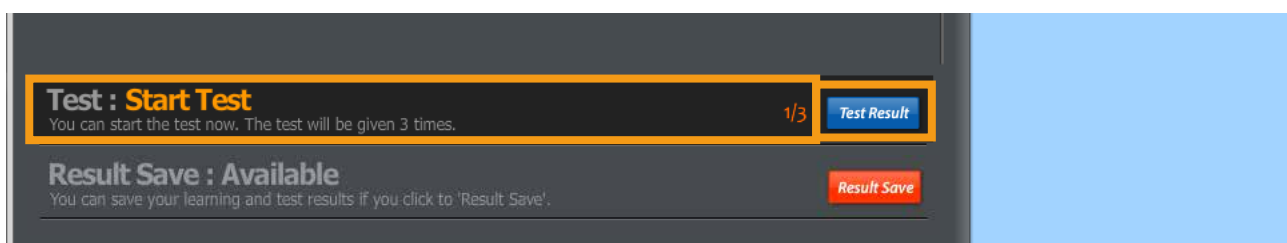
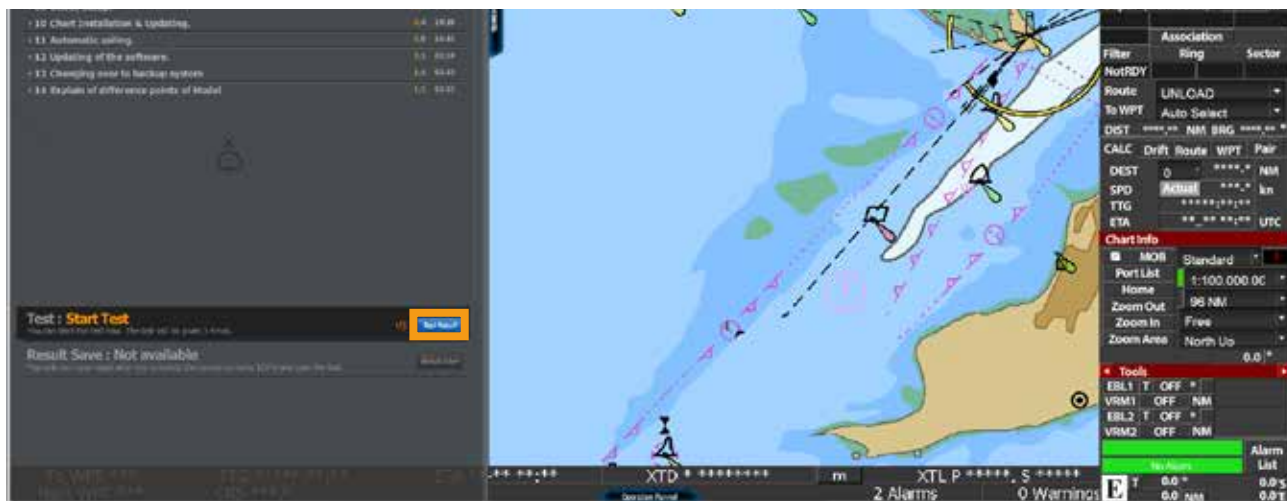
14. When you submit your answers, the test result will be displayed and you can find your result right away. If you don't pass the test, below message will be pop-up automatically and you can retest by clicking the 'Retry TEST' button.



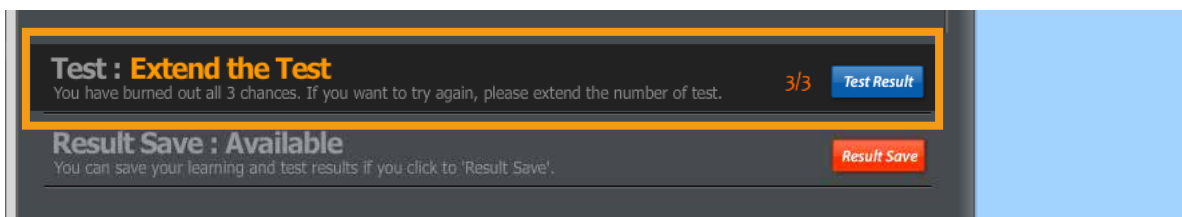
15. You can review your test result by clicking the 'Detail View' button in below page.



16. The test result also can be checked in Contents list page as below image.
If you want to try again, click the 'Start Test bar'.

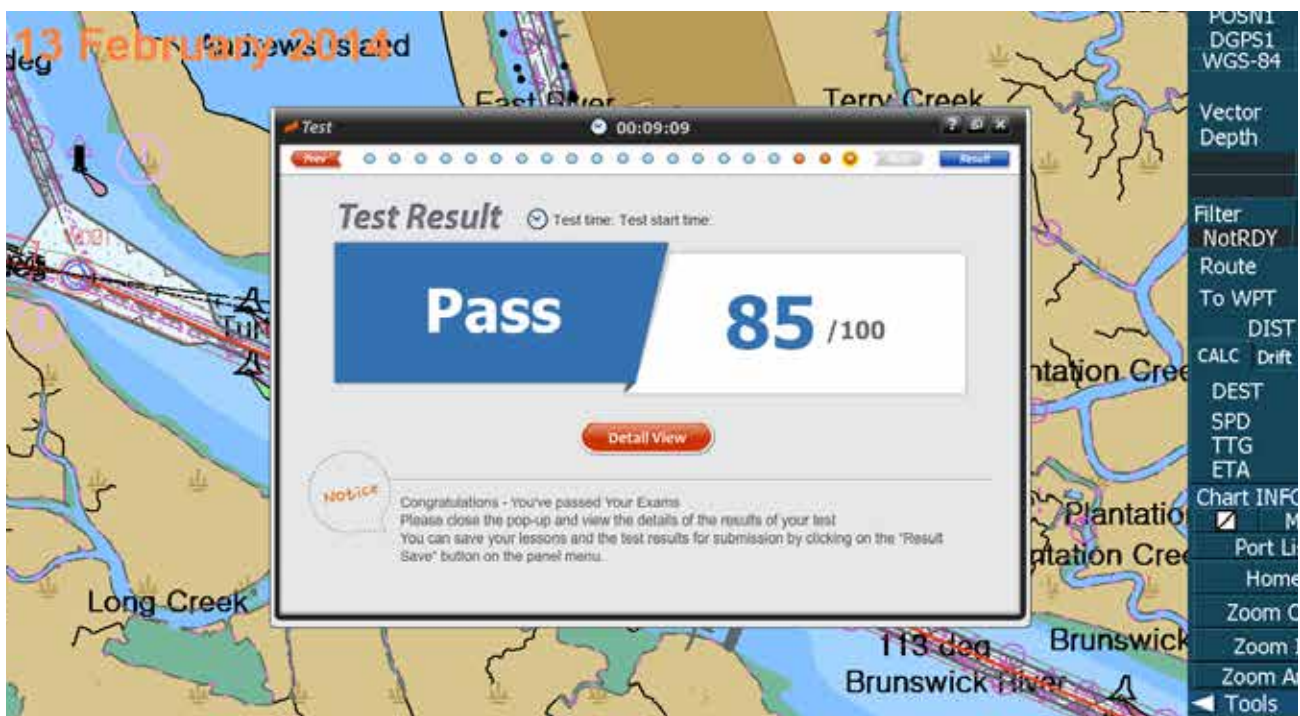
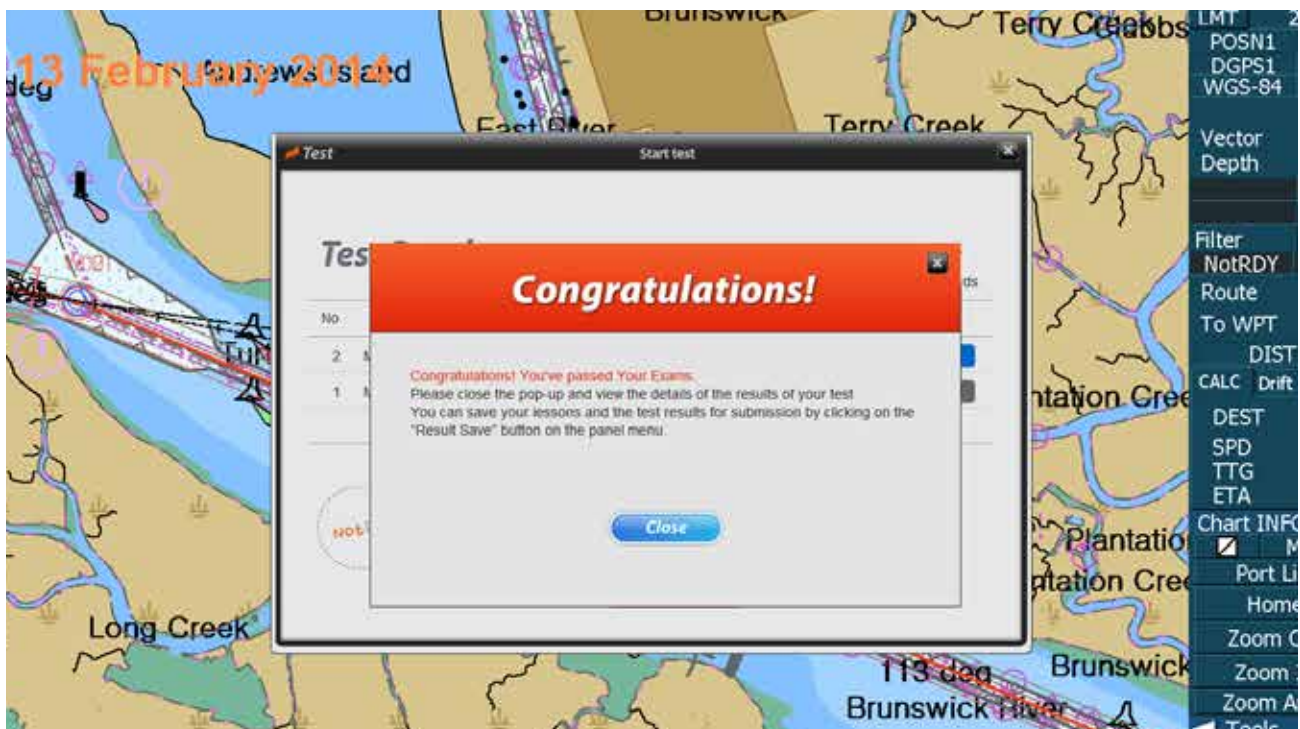


If you fail the test three consecutive times, you need to renew your license for additional three chances for the test, and please refer to your trainer for further details.

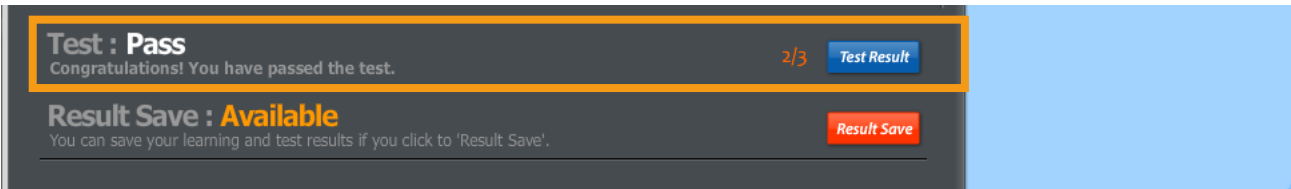
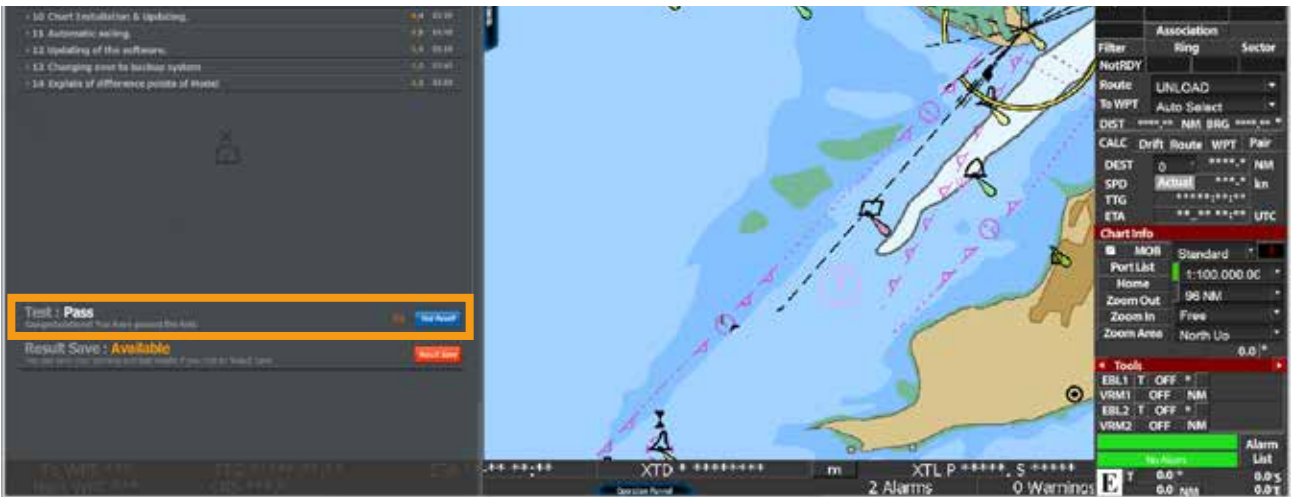


8. Saving Results

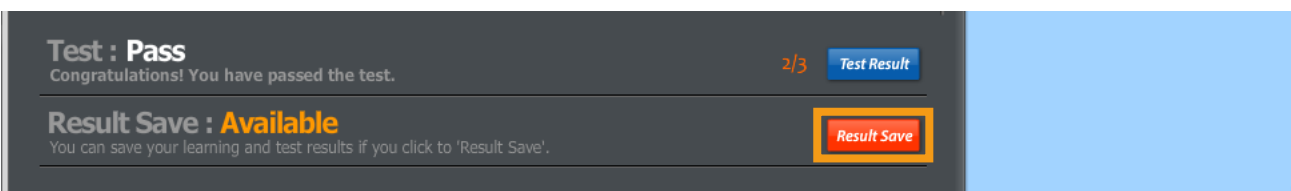
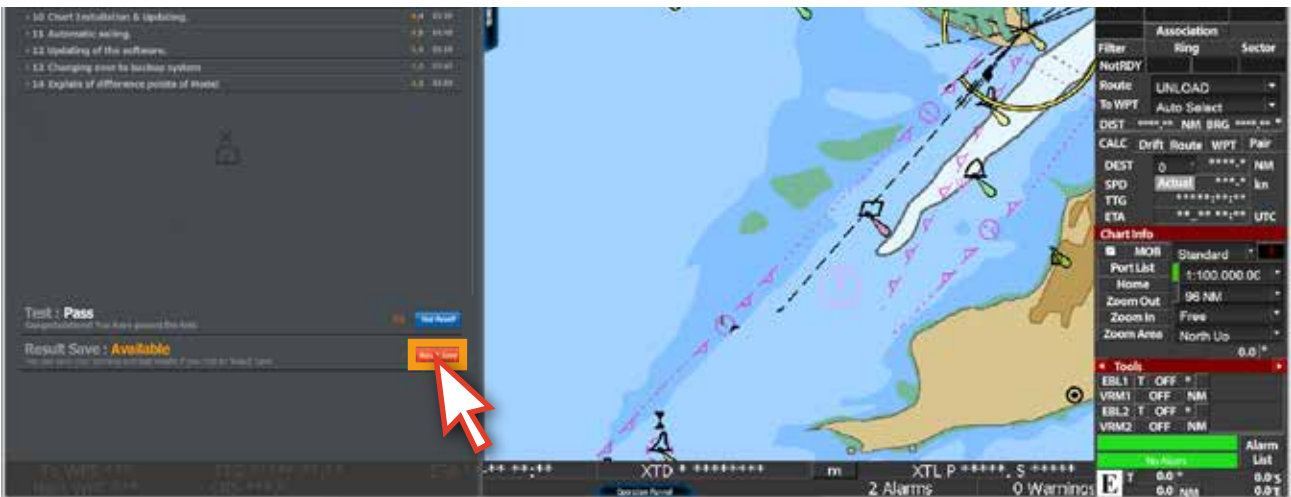
1. If you pass the test, below pop-up message will appear.



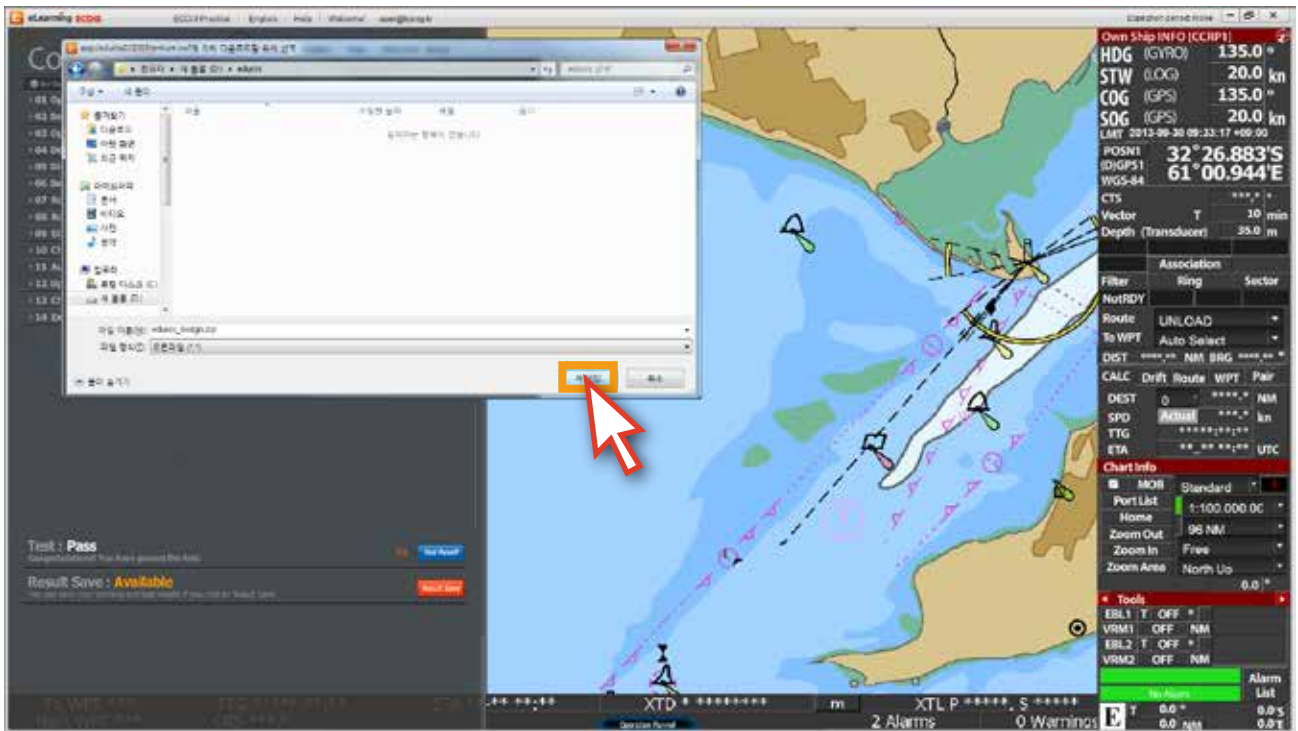
2. The 'test result' can be checked in Contents list page.



3. The passed test result should be saved.
Click the 'Result Save' button to save your test result.



4. Select the folder location to save the test result.



Section II

1. User Verification

When you pass the test, you will have reached the final step to ensure the identity of yourself for the certification.

There are two types of verification process available “interview or Guarantee Letter” you can select any of which more convenient for you depend on your situations.

1) Interview

There are two types of interviews “online Video or Offline-Person to Person Interview” you can select any of which depend on your situations by choosing a date and time for the interview at the verification page.

2) Guarantee Letter

It’s an official document issued by an authorized trainer or the company’s representative assuring that the user who apply for the verification is the one who complete the course and pass the test.



< Online Video Interview >



< Person to Person Interview >



< Sample: Guarantee Letter >

2. Certification

After finishing user verification process, the 'Certificate' will be issued under the name of Registered training company. The following type of certificates are available depending on where you belong at the time of registration and the cost.

Certification B	JRC issued Cert
Certification C	JRC authorized Trainer by Agent
Certification D	JRC authorized Trainer by Owner
Certification E	JRC authorized Trainer by School or Company

If you want the type of certification B, you should pay JPY 20,000 extra cost for it.



< Sample: Certification C >

Section III

1. Glossary of Terms

ACK

Acknowledge

ACQ

Acquire, Acquisition

AZ

Acquisition Zone

AIO

Admiralty Information Overlay. AIO is a digital dataset that is designed to be displayed over ENC's in ECDIS to provide additional information to the navigation published by United Kingdom Hydrographic Office (UKHO).

AIS

Automatic Identification System

ARCS

Admiralty Raster Chart Service.
A raster chart published by UKHO

ARPA

Automatic RADAR Plotting Aid.
Collision prevention radar.

AUTHORIZATION CODE

Encryption key for C-MAP Ed.2.
Supplied by C-MAP Norway.

AUTO SAIL

The system automatically navigates to keep the scheduled route. Same as automatic sailing.

Base CD

Chart CD containing a complete chart data

CCRP

Consistent Common Reference Point

Cell Permit

A file containing an encryption key for S-63 chart. Supplied by UKHO, PRIMAR STAVANGER, and Hydrographic and Oceanographic Department of Japan Coast Guard.

Chart Portfolio

Software to manage the charts.
Imports and updates the charts.

C-MAP Ed.2

C-MAP Edition 2.
A digital chart format by C-MAP Norway

C-MAP Ed.3

C-MAP Edition 3.
A digital chart format by C-MAP Norway

C-MAP

Nautical chart in a digital format by C-MAP Norway

CPA

Closest Point of Approach

CRS

Course

CTS

Course to steer

COG

Course Over the Ground

Data Server

Organization providing S-63 chart

Display

Screen displayed on the LCD

DIST

Distance

DR

Dead Reckoning

EBL

Electronic Bearing Lines

ECDIS

Electronic Chart Display and Information System

ENC

Electronic Navigation Chart. Meaning S-57 and S-63.

ETA

Estimated Time of Arrival

ETD

Estimated Time of Departure

F.ETA

Final ETA.
Estimated time of arrival to the final waypoint

GC

Great Circle

HDD

Hard Disk Drive

HDG

Heading, Ship's heading

Hydrographic and Oceanographic Department

Hydrographic and Oceanographic Department of
Japan Coast Guard. Publisher of ENC

Import (for Chart Portfolio)

A procedure of enabling the chart supplied by Base
CD to be displayed on ECDIS

LAT

Latitude

Leg

Line between two consecutive waypoints

LMT

Local Mean Time

LON

Longitude

LOP

Line of Position

MOB

Man over board

POSN

Position

Primary

Main positioning sensor

PRIMAR STAVANGER

A Norwegian company supplying charts.
Publisher of encrypted charts, S-63

Range

An area of the chart displayed on the screen.
Represented by one half of the length of the chart
display screen

RCDS

Raster Chart Display System

RL

Rhumb Line

RM

Relative Motion

RNC

Raster Navigation Chart

Rubber band

Border that indicates the selected range

S-57

IHO transfer standard for digital hydrographic data

S-63

IHO Data Protection Scheme

SA Certificate file

An electronic file certifying the supplier of S-63 chart.
Required for import/ update of S-63 chart.

Scale

The display scale

SENC

System Electronic Navigational Chart

Ship-avoiding operation

To operate the ship in order to avoid obstacles
during automatic navigation, regardless of the
scheduled route.

SOG

Speed Over the Ground

Spot depth

Numeric representation of depth

STW

Speed through water

TCPA

Time Closest Point of Approach

TCS

Track Control Systems

TM

True Motion

TT

Target Tracking

UKHO

United Kingdom Hydrographic Office

Update (for Chart Portfolio)

A procedure of reflecting the update data supplied by Update CD on the imported chart

Update CD

Chart CD containing the chart data updated from Base CD. Base CD data has been imported.

USER CODE

A user-specific code assigned by JRC.
Required in using ARCS and S-63 charts.

UTC

Universal Time, Coordinated

VRM

Variable Range Markers

WOL

Wheel Over Line

WOP

Wheel Over Point

WPT

Waypoint

WPT-WPT

The division of the leg specified by two waypoints.
Displays data between two consecutive waypoints

XTD

Cross Track Distance

XTL

Cross Track Limit

2. Documents

The Trainee is requested to submit the relevant drawings to the KJ Sales department in due course.

No	Documents	Before course		Before Certification	
		Online	Offline	Online	Offline
1	Company Survey Form	×	○	○	×
2	Ship Survey Form	×	○	○	×
3	Trainee Personal Information A	○	○	×	×
4	Trainee Personal Information B	×	×	○	○
5	Letter of Guarantee	×	×	×	○
6	Copy of Master's ID Seaman's certification, Identification, etc.	×	×	×	○
7	Copy of Assessor's ID Identification, etc.	×	×	×	○
8	Training Evaluation Survey	×	×	○	○
9	Training Report	×	×	×	○

Company Survey Form

Company Name			
Company Name			
Registration No			
Found			
Address			
Tel. No		Fax. No	
Main email		website	
eEtst Group Code			

Contact Info			
Name		eEtst ID	
Dep't		Position	
Tel. No		email	

Trainer Info			
Name		JRC Cert. No	
Dep't		Position	
Tel. No		eEtst ID(email)	

Trainer Info			
Name		JRC Cert. No	
Dep't		Position	
Tel. No		eEtst ID(email)	

Trainer Info			
Name		JRC Cert. No	
Dep't		Position	
Tel. No		eEtst ID(email)	

Ship Survey Form

Ship Info			
Ship Name		Master Name	
Call Sign		IMO No	
Trainer Name		Trainer eEtst ID	
Tel. No		Fax. No	
Main email		Number of eEtst ID	

Trainee Info			
Name		eEtst ID(email)	
Date of Birth		Rank/Position	

Trainee Info			
Name		eEtst ID(email)	
Date of Birth		Rank/Position	

Trainee Info			
Name		eEtst ID(email)	
Date of Birth		Rank/Position	

Trainee Info			
Name		eEtst ID(email)	
Date of Birth		Rank/Position	

Trainee Info			
Name		eEtst ID(email)	
Date of Birth		Rank/Position	

Trainee Info			
Name		eEtst ID(email)	
Date of Birth		Rank/Position	

Personal Information

Type A

Type	Simple	Entry Time	Sign Up and Sign In
------	--------	------------	---------------------

1. Entry info	Format
Email	Enter a valid email address
Password	Enter your password / 6~12 characters
Confirm Password	Confirm your password

Type B

Type	Complex	Entry Time	Payment
------	---------	------------	---------

1. Personal Info	Format
ID	Auto ID number
Full Name	Personal name
Sex.	Mail or Female
Picture	Image File Format
Rank/Position	An official position of the company or ship
Date of Birth	YYYY-MM-DD
Address	Enter your address
Nationality	Enter your country where you belong
2. eLearning Info	
Course IDy	-
Course Name	It is specific to the course you are using Enter your course name
3. Trainer / Assessor Info	
Group ID	-
Group Name	It is specific to the group you belong to Enter your group Name
Trainer(Assessor) Name	Enter your trainer Name
4. Qualification Info	
Passport No.	-
A Copy of Passport	Enter your passport number Image File Format
A Copy of Generic ECDIS Cert.	Image File Format
Cert. No of Generic ECDIS course	Enter your cert number
5. Company info	
Name	-
PIC	Enter the company namer Person in charge of ECDIS training
Email	Enter the company email address
Telephone	Enter the company phone number
6. Ship info	
Name	-
IMO No.	Enter the ship name Enter the ship IMO Number
email	Enter the ship email address

Letter of Guarantee

To ensure all courses are done according to our procedures, all documents and checklists must be signed and stamped. This must be done by Master or a qualified onboard Assessor or an office Assessor.

The Master/Assessor is jointly responsible that the applications receive appropriate training and full certification on board ship for the JRC ECDIS TST according to the STCW 95 regulation I/6 and section A-I/6 for the training and assessment of competence of Seafarers.

If it is revealed that an application is partially or entirely a duplicate of another application, the application will be rejected and certificate will not be issued.

When there are two more applicants, please attaché a list of all trainees

Trainee			
Full Name		Ship Name	
Date of Birth		Course Name	
Rank/Position		eLearning ID	
Nationality		-	-

I will guarantee the following items regarding the above entry for the edurosECDIS Course.

- The participant's ID and personal details are correct
- The CBT training is individual and unaided work
- The CBT is 100% completed and achieved an assessment (more than 70%)
- Expenses for the applicant's course
- Compliance with the eLearning Service Agreement

I hereby declare that the above is true.

Guarantor			
Date		Company	
Name		Trainer	
Company/Ship Name		Assessor	
Division / Position		-	-

(Signature)

(Seal)

Note) Please put the registered seal of the company together with his/her signature.

Training Evaluation Survey

Thank you for attending edurocECDIS training course. We'd like to hear your impression of the various aspects of the training, so that we can continually improve the experience for all trainees.

Course Name :		Date :		
-	Excellent	Good	Fair	Poor
① Overall how would you rate the training courses?				
② Please rate the following aspects of the elearning contents ?	-	-	-	-
- Did this course meet your expectation ?				
- Were the contents appropriate for ECDIS TST ?				
- How do you think of the presentation (Graphic, Animation, Audio..)?				
③ Please rate the following aspects of the elearning system ?	-	-	-	-
- Registration				
- Course Timing				
- Speed				
- Cost & Pricing				
④ Do you consider the eLearning course to be a good tool for training?				
⑤ Was any help provided when needed ?				
-	Yes (Please Specify it if yes)		No	
⑥ Did you encounter any technical problem with the course ?				
-	Very Likely	Somewhat	Not	
⑦ Based on your experience, How likely are you attend to similar courses in the future ?				
⑧ What was your favorite part of the training?				
⑨ What was your least favorite part of the training?				
⑩ Any other suggestions or comments to help us improve future training classes?				

Training Report

Training reports are to be provided montly to the KJE to facilitate maintaining an overview of the project and monitoring of the scope and status;

Trainee I		
Trainee ID		-
Trainee Name		-
Ship Name		-
Trainer(Assessor) Name		-
Course Prgress		1~100%
Test Score		1~100
Verification Method		Interview / Guarantee Letter
Verification Date		-
Cert. Issuance Date		-
Cert. No		-

Trainee II		
Trainee ID		-
Trainee Name		-
Ship Name		-
Trainer(Assessor) Name		-
Course Prgress		1~100%
Test Score		1~100
Verification Method		Interview / Guarantee Letter
Verification Date		-
Cert. Issuance Date		-
Cert. No		-

KJ 엔지니어링
ENGINEERING

Smart Ship Simple Solution

#202, Sunkyung Bldg., 16-6, Jungang-daero 180beon-gil, Dong-gu, Busan, Korea
TEL +82-51-404-5650 FAX +82-51-404-5655 e-mail: tech@kjeng.kr

KJ ENGINEERING: www.kjeng.kr / eduros: www.eduros.com

Update: 2014.05.21